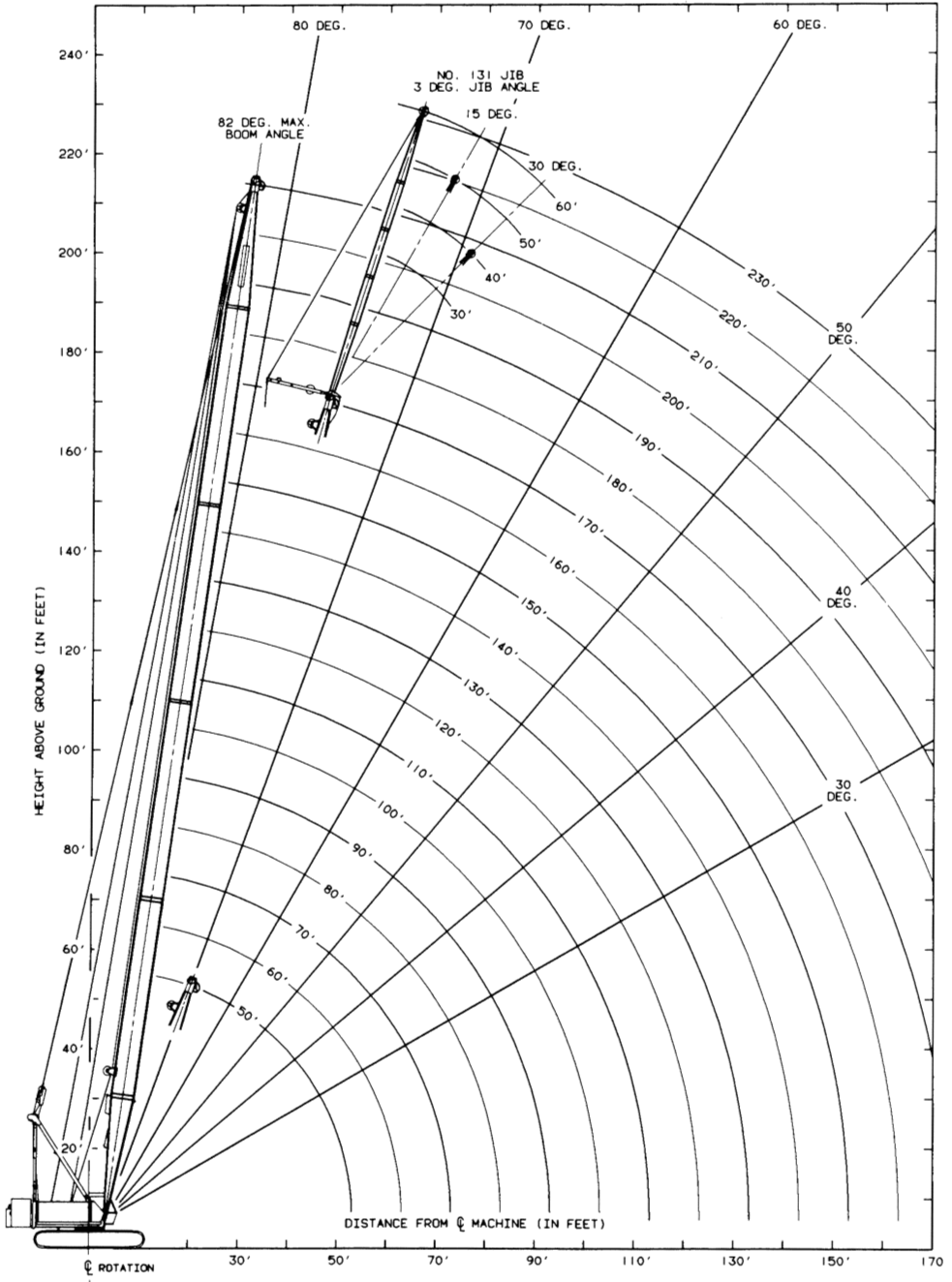
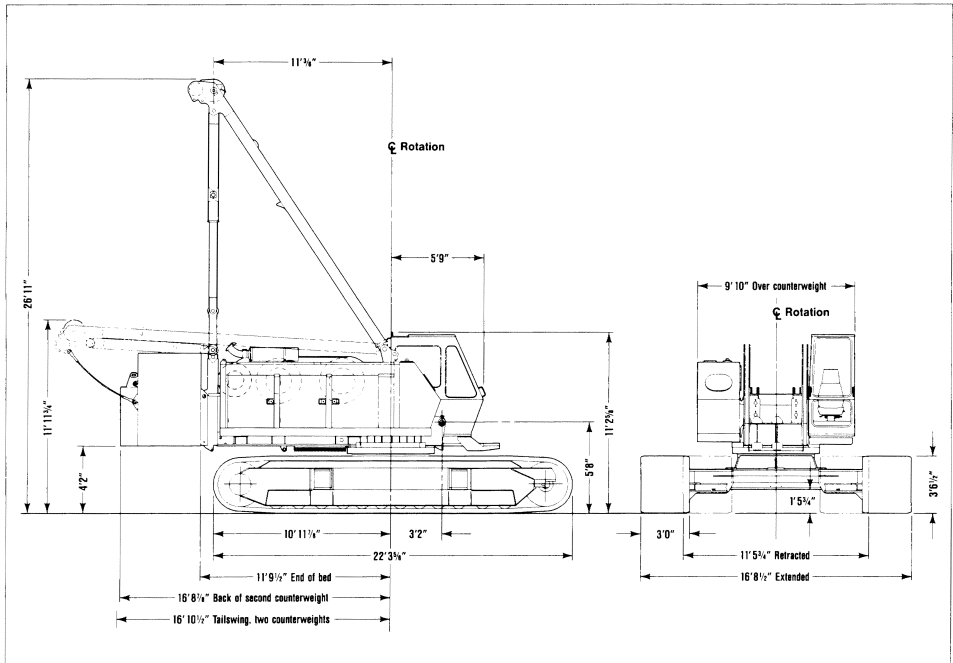


MANITOWOC M-85W – 95-Ton liftcrane

20,000 lb CLAMSHELL 18,000 lb DRAGLINE



MANITOWOC M-85w – Outline dimensions



SPECIFICATIONS

BASIC MACHINE

Upperworks

ROTATING BED: Fabricated steel rotating bed is mounted on 64 $\frac{3}{4}$ " diameter turntable bearing.

DRUMS: Basic machine is equipped with two full-width drums. Drums are 25" wide and 19 $\frac{1}{4}$ " diameter. Each drum is antifriction mounted on a separate shaft and is driven independently by a fixed-displacement hydraulic motor through a reduction gear. Internal-expanding drum clutches are spring set, air released. External-contracting drum brakes are air applied, spring released. Parking brakes are spring set, air released.

BOOM HOIST: Rear-mounted independent two-drum boom hoist is powered by a fixed-displacement hydraulic motor coupled to a planetary reduction, and is equipped with ratchet and pawl.

SWING SYSTEM: Front-mounted independent swing is powered by a fixed-displacement hydraulic motor coupled to an internal brake and planetary reduction. Includes gear-segment type swing lock.

OPERATOR'S STATION: Fully enclosed and insulated steel module mounted to the left front corner of rotating bed. Module is equipped with sliding door, large safety glass windows on all sides and roof. Electric signal horn, cab space heater, upper front windshield wiper, dome light, and air circulating fan are standard equipment.

Lowerworks

CARBODY: Single-piece steel fabricated carbody incorporates wide wings that facilitate removal from pockets in crawler frames. Crawlers hydraulically extend to 16' 8 $\frac{1}{2}$ " and hydraulically retract to 11' 5 $\frac{1}{4}$ ".

CRAWLERS: Crawler assemblies are 22' 3 $\frac{3}{4}$ " long reinforced steel fabrications with 36" closed treads and sealed "low-maintenance" rollers. Each crawler is powered independently by a variable-displacement hydraulic motor driving through a planetary reduction. Crawlers provide counter-rotation capability.

ENGINE/TRANSMISSION: Cummins 6 CTA 8.3 diesel engine rated at 234 HP at 2200 RPM provides independent power for all machine operations through the multi-hydraulic-pump transmission. Power system also includes engine block heater (120V), high silencing muffler, hydraulic oil cooler, radiator, and fan.

CONTROLS: Modulating electric-over-hydraulic controls provide infinite function speed response directly proportional to control movement. Selector switch permits hoisting drums to be operated in power-down (liftcrane), free-fall (excavator), or clamshell mode.

MANITOWOC M-85W – Performance data

Wire Rope Specifications					
Application	Dia.	Description	Breaking Strength	Weight	Max. Operating Length
Lift	7/8"	6 x 25 EIPS Regular Lay	79,600 Lbs.	1.42 Lbs./Ft.	779' Hoist 779' Whip
Clam	7/8"	6 x 25 EIPS Regular Lay	79,600 Lbs.	1.42 Lbs./Ft.	300' Closing 240' Holding
Drag	7/8"	6 x 25 EIPS Lang Lay	79,600 Lbs.	1.42 Lbs./Ft.	215' Hoist 135' Drag
Boom Hoist	5/8"	6 x 26 EIPS Alternate Lay	41,200 Lbs.	0.72 Lbs./Ft.	690'

Line Pull Vs. Line Speed* — Line Pull Infinitely Variable From 0 to 20,000 Lbs.			
Line Pull	Line Speed	Divert 1 Travel Pump	Divert 2 Travel Pumps
0 Lbs.	217 FPM	354 FPM	488 FPM
5,000 Lbs.	213 FPM	343 FPM	470 FPM
10,000 Lbs.	210 FPM	337 FPM	452 FPM
15,000 Lbs.	208 FPM	310 FPM	310 FPM
20,000 Lbs.	204 FPM	231 FPM	231 FPM

*Chart data based on 19/4" diameter smooth drum, 5th layer.

SWING SPEED: 3.5 RPM.

TRAVEL SPEED: 1.0 MPH.

GRADEABILITY: 30%.

BOOM HOIST SPEED: 210' boom, 0° to 82° — 1 minute, 38 seconds.

LIFTCRANE ATTACHMENT

BASIC BOOM: The liftcrane is equipped with 50' No. 47 basic boom consisting of 25' butt and 25' top with five 22" diameter antifriction-bearing-mounted steel sheaves. Includes rope guides, boom hoist wire rope, boom angle indicator, and hook and weight ball.

Gantry with telescopic backhitch and power operated back-hitch pins.

Telescopic air-cushioned boom stop.

Automatic boom stop.

COUNTERWEIGHT: Two-piece removable counterweight, total 46,500 lbs., with power-operated pins and with counterweight-handling pendants.

OPTIONAL EQUIPMENT

BOOM AND JIB:

10' No. 47 Boom insert with pendants

20' No. 47 Boom insert with pendants

40' No. 47 Boom insert with pendants

30' No. 131 Jib with mounting parts

10' Jib insert with pendants

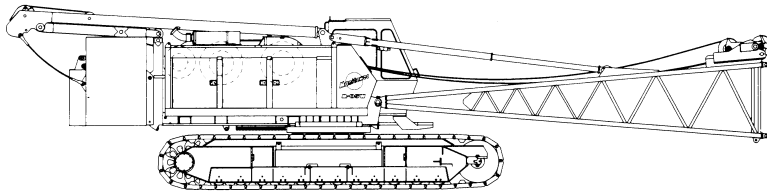
ATTACHMENTS:

Manitowoc 95-ton five-sheave load block
Single-sheave upper boom point (whipline)
Pendant links for load-moment sensor pin
Dragline fairlead
Tagline, Rud-O-Matic No. 1248, two barrel
Liftcrane lagging, 20 3/4" diameter, grooved for
7/8" diameter rope — front/rear
Clamshell/dragline lagging, 20 3/4" diameter, grooved
for 7/8" diameter rope — front/rear
Lift/clam/drag wire rope, 7/8" diameter, 6x25 EIPS
Machine preparation for X-SPANDER®
X-SPANDER attachment
Other attachments on request

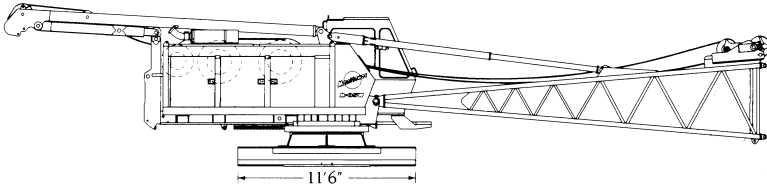
BASIC MACHINE OPTIONS:

Split drum shaft assembly in place of
single drum shaft
Drum rotation indicators (2)
Windshield wiper, lower front window
Windshield wiper, roof window
Ether starting aid
Alcohol injector in air line
Fire extinguisher
Air conditioner in operator's cab
Hydraulic third drum on front of rotating bed,
11,000 lb. line pull
Special paint — machinery enamel in color other than
Manitowoc standard
Block up limit control for load or auxiliary line
Bail limit control for hoist drums

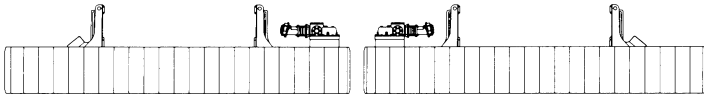
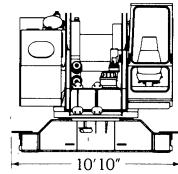
MANITOWOC M-85W – Shipping data (all dimensions length x width x height)



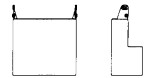
Complete liftcrane less boom top: 149,880 Lbs.
49'5" x 11'6" x 12'0"



Basic machine with boom butt & gantry: 57,695 Lbs.
49'5" x 10'10" x 10'6"



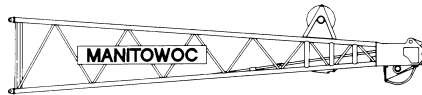
Crawler frames (with counterweights): Each 22,750 Lbs.
22'4" x 5'9" x 3'7"



Outer counter-weight: 6,500 Lbs.
4'7" x 4'2" x 2'0"



Inner counterweight: 40,000 Lbs.
9'10" x 4'8" x 5'9"



Boom top: 3,290 Lbs.
25'0" x 5'0" x 5'4"

Unit	Weight (Lbs.)	Dimensions (L x W x H)
10' Boom insert	715	10'4" x 5' x 5'4"
20' Boom insert	1,195	20'4" x 5' x 5'4"
40' Boom insert	2,260	40'4" x 5' x 5'4"
30' Basic jib	2,035	Pack inside 40' boom insert
10' jib insert	205	Pack inside 40' boom insert
95-Ton hook block with steel sheaves	2,180	6'6" x 2'6" x 2'4"
Weight ball	610	4'2" x 2'4" x 2'4"
Pendant box	1,200	5' x 5' x 2'
Miscellaneous box	2,700	8' x 4' x 4'

MANITOWOC M-85W – Liftcrane capacities

boom no. 47 3 080 KG CRAWLER FRAME COUNTERWEIGHT

21 090 KG COUNTERWEIGHT

6 807 MM CRAWLERS EXTENDED

360° RATING

Capacities for various boom lengths and operating radii are for freely suspended loads and are calculated to comply with BS 1757-1986 clause 9, I.S.O. 4305 and BS 2573 part 1 – 1983 tables 5(a) and 6(a). Capacities based on structural competence are denoted by an asterisk(*).

Upper boom point capacity for liftcrane service with single part whip line is 9 070kg. In all cases, upper boom point capacities cannot exceed those listed for the main boom capacity.

Weight of jib, all load blocks, hooks, weight ball, slings hoist lines, etc., beneath boom and jib point sheaves, is considered part of the main boom load. Boom is not to be lowered beyond radii where combined weights are greater than rated capacity. Where no capacity is shown, operation is not intended or approved.

Machine to operate in a level position on a firm uniformly supporting surface with crawlers fully extended (5 093mm) and gantry up. Refer to boom rigging no. 169352 and wire rope specification chart no. 7554-A. Crane operator judgement must be used to allow for dynamic load effects of swinging, hoisting or lowering, travel, wind conditions, as well as adverse operating conditions and physical machine depreciation.

Machine may be operated in winds up to those shown in table provided crane operator judgement is

used to allow for wind effect on the lifted load and other considerations noted on the capacity chart are followed. Wind will have a considerable effect on a load with a large 'sail area' and must be compensated for accordingly by reducing load ratings, reducing operating speeds or by a combination of both. Recommend stopping operation when wind is above those shown in table and tying off or lowering boom when wind is above 16 m/s.

Machine to travel on a firm, level and uniformly supporting surface and boom within the boom angle range shown in capacity chart.

Operating radius is the horizontal distance from the axis of rotation to the centre of vertical hoist line or load block. Boom angle is the angle between horizontal and centreline of boom butt and inserts, and is an indication of operating radius. In all cases, operating radius shall govern capacity. Boom point elevation is vertical distance from ground level to centreline of boom point shaft.

Machine equipped with 6 807mm extendible crawlers, 914mm treads, 5 791mm retractable gantry, 12 part boom hoist reeving, two 35mm boom pendants, 1st counterweight = 18 140kg, and 2nd counterweight = 2 950kg and two 1 540kg crawler frame counterweights.

WIND LIMITS DURING OPERATION		MAXIMUM BOOM AND JIB LENGTHS LIFTED UNASSISTED				DEDUCT FROM CAPACITIES WHEN JIB IS ATTACHED	
MAXIMUM WIND VELOCITY	BOOM LENGTH	OVER END OF BLOCKED CRAWLERS		OVER SIDE OF EXTENDED CRAWLERS		JIB LGTH.	JIB NO. 131
m/s	METERS	BOOM LGTH.	JIB NO. 131	BOOM LGTH.	JIB NO. 131		
14	15.2 - 45.7	64.0m	---	54.9m	---	9.1m	1 000 kg
10	48.8 - 57.9	61.0m	---	51.8m	---	12.2m	1 180 kg
7	61.0 - 64.0	57.9m	---	48.8m	15.2m	15.2m	1 410 kg
		54.9m	15.2m	45.7m	18.3m	18.3m	1 630 kg
		51.8m	18.3m				

LOAD BLOCK, HOOK AND WEIGHT BALL ON GROUND AT START.

CONSULT JIB CHART FOR JIB CAPACITIES.

BOOM LGTH. METERS	BOOM LGTH. FEET	OPER. RADIUS METERS	BOOM POINT ANG. DEG.	ELEV. METERS	CAPACITY KILOGRAMS
15.2	50	3.7	80.7	16.7	86 100*
		4.0	79.6	16.7	80 000*
		4.5	77.7	16.6	69 600*
		5.0	75.7	16.4	62 500*
		5.5	73.8	16.3	56 500*
		6.0	71.8	16.1	50 000
		7.0	67.8	15.7	39 100
		8.0	63.6	15.2	32 100
		9.0	59.3	14.7	27 000
		10.0	54.7	14.0	23 300
		11.0	49.9	13.2	20 400
		12.0	44.7	12.2	18 100
		14.0	32.3	9.6	14 700

BOOM LGTH. METERS	BOOM LGTH. FEET	OPER. RADIUS METERS	BOOM POINT ANG. DEG.	ELEV. METERS	CAPACITY KILOGRAMS
18.3	60	4.0	81.3	19.8	78 100*
		4.5	79.8	19.7	69 500*
		5.0	78.2	19.6	62 300*
		5.5	76.5	19.4	56 400*
		6.0	74.9	19.3	49 900*
		7.0	71.6	19.0	39 000
		8.0	68.3	18.6	31 900
		9.0	64.8	18.2	26 900
		10.0	61.3	17.6	23 200
		11.0	57.6	17.0	20 300
		12.0	53.8	16.3	18 000
		14.0	45.4	14.6	14 500
		16.0	35.6	12.1	12 100
		18.0	22.2	8.4	10 300

MANITOWOC M-85w – Liftcrane capacities boom no. 47

3 080 KG CRAWLER FRAME COUNTERWEIGHT

21 090 KG COUNTERWEIGHT

6 807 MM CRAWLERS EXTENDED

360° RATING

BOOM LGTH. METERS	BOOM LGTH. FEET	OPER. RADIUS METERS	BOOM ANG. DEG.	BOOM POINT ELEV. METERS	CAPACITY KILOGRAMS
21.3	70	4.3	81.8	22.8	70 700*
		4.5	81.2	22.8	68 700*
		5.0	79.9	22.7	62 000*
		5.5	78.5	22.6	56 100*
		6.0	77.1	22.5	49 900
		7.0	74.3	22.2	38 900
		8.0	71.5	21.9	31 800
		9.0	68.6	21.5	26 800
		10.0	65.7	21.1	23 100
		11.0	62.7	20.6	20 200
		12.0	59.6	20.0	17 900
		14.0	53.1	18.6	14 400
		16.0	46.0	16.9	12 000
		18.0	37.8	14.6	10 100
20.0	27.6	11.4	8 700		
24.4	80	4.9	81.4	25.8	62 600*
		5.0	81.1	25.8	61 400*
		5.5	80.0	25.7	56 000*
		6.0	78.8	25.6	49 800
		7.0	76.3	25.4	38 900
		8.0	73.9	25.1	31 700
		9.0	71.4	24.8	26 700
		10.0	68.9	24.4	23 000
		11.0	66.4	24.0	20 100
		12.0	63.8	23.5	17 800
		14.0	58.4	22.3	14 300
		16.0	52.6	20.9	11 800
		18.0	46.4	19.2	10 000
		20.0	39.4	17.0	8 600
22.0	31.1	14.1	7 500		
24.0	19.8	9.7	6 500		
27.4	90	5.2	81.7	28.8	56 600*
		5.5	81.1	28.8	55 700*
		6.0	80.0	28.7	49 800
		7.0	77.9	28.5	38 700
		8.0	75.7	28.2	31 600
		9.0	73.6	28.0	26 600
		10.0	71.4	27.6	22 800
		11.0	69.1	27.3	19 900
		12.0	66.9	26.8	17 600
		14.0	62.2	25.9	14 200
		16.0	57.4	24.7	11 700
		18.0	52.2	23.2	9 900
		20.0	46.7	21.5	8 400
		22.0	40.5	19.3	7 300
24.0	33.5	16.6	6 400		
26.0	24.7	12.9	5 600		

BOOM LGTH. METERS	BOOM LGTH. FEET	OPER. RADIUS METERS	BOOM ANG. DEG.	BOOM POINT ELEV. METERS	CAPACITY KILOGRAMS
30.3	100	5.5	82.0	31.9	51 000*
		6.0	81.0	31.8	49 000
		7.0	79.1	31.6	38 600
		8.0	77.2	31.4	31 500
		9.0	75.3	31.1	26 500
		10.0	73.3	30.8	22 700
		11.0	71.3	30.5	19 800
		12.0	69.3	30.1	17 500
		14.0	65.2	29.3	14 000
		16.0	61.0	28.2	11 600
		18.0	56.6	27.0	9 700
		20.0	51.9	25.5	8 300
		22.0	46.9	23.8	7 200
		24.0	41.5	21.7	6 300
26.0	35.3	19.1	5 500		
28.0	28.0	15.8	4 800		
30.0	18.3	11.0	4 200		
33.3	110	6.1	81.7	34.9	45 900*
		7.0	80.1	34.7	38 600
		8.0	78.4	34.5	31 400
		9.0	76.6	34.3	26 400
		10.0	74.9	34.0	22 600
		11.0	73.1	33.7	19 700
		12.0	71.3	33.4	17 400
		14.0	67.6	32.6	13 900
		16.0	63.8	31.7	11 500
		18.0	60.0	30.6	9 700
		20.0	55.9	29.3	8 200
		22.0	51.6	27.8	7 100
		24.0	47.1	26.1	6 100
		26.0	42.2	24.0	5 400
28.0	36.8	21.6	4 700		
30.0	30.5	18.5	4 200		
32.0	22.7	14.4	3 700		
36.3	120	6.4	81.9	37.9	41 500*
		7.0	81.0	37.8	38 300
		8.0	79.4	37.6	31 300
		9.0	77.8	37.4	26 300
		10.0	76.1	37.2	22 500
		11.0	74.5	36.9	19 600
		12.0	72.9	36.6	17 300
		14.0	69.6	35.9	13 900
		16.0	66.2	35.1	11 400
		18.0	62.7	34.1	9 500
		20.0	59.1	33.0	8 100
		22.0	55.3	31.7	7 000
		24.0	51.4	30.1	6 100
		26.0	47.3	28.4	5 300
28.0	42.8	26.4	4 600		
30.0	37.9	24.0	4 100		
32.0	32.4	21.1	3 600		
34.0	25.9	17.4	3 100		

MANITOWOC M-85W – Liftcrane capacities boom no. 47

3 080 KG CRAWLER FRAME COUNTERWEIGHT

21 090 KG COUNTERWEIGHT

6 807 MM CRAWLERS EXTENDED

360° RATING

BOOM LGTH. METERS	BOOM LGTH. FEET	OPER. RADIUS METERS	BOOM ANG. DEG.	BOOM POINT ELEV. METERS	CAPACITY KILOGRAMS
3 9 6	1 3 0	7.0	81.7	40.9	37 400*
		8.0	80.2	40.7	31 200
		9.0	78.7	40.5	26 200
		10.0	77.2	40.3	22 400
		11.0	75.7	40.1	19 500
		12.0	74.2	39.8	17 200
		14.0	71.2	39.1	13 700
		16.0	68.1	38.4	11 200
		18.0	65.0	37.5	9 400
		20.0	61.7	36.5	7 900
		22.0	58.4	35.3	6 800
		24.0	54.9	34.0	5 900
		26.0	51.2	32.4	5 100
		28.0	47.4	30.7	4 400
		30.0	43.3	28.7	3 900
		32.0	38.9	26.4	3 400
		34.0	33.9	23.6	3 000
		36.0	28.3	20.2	2 600
		38.0	21.2	15.8	2 200
		4 2 7	1 4 0	7.3	81.8
8.0	80.9			43.8	30 900
9.0	79.5			43.6	26 000
10.0	78.2			43.4	22 300
11.0	76.8			43.2	19 400
12.0	75.4			42.9	17 000
14.0	72.6			42.4	13 600
16.0	69.8			41.7	11 100
18.0	66.9			40.9	9 200
20.0	63.9			39.9	7 800
22.0	60.9			38.9	6 700
24.0	57.7			37.6	5 700
26.0	54.5			36.3	5 000
28.0	51.1			34.7	4 300
30.0	47.5			33.0	3 700
32.0	43.7			31.0	3 300
34.0	39.7			28.7	2 800
36.0	35.2			26.1	2 500
38.0	30.2			22.9	2 100
40.0	24.2			19.0	1 800
4 5 7	1 5 0	7.6	82.0	47.0	31 100*
		8.0	81.5	46.9	30 500*
		9.0	80.2	46.7	25 900
		10.0	79.0	46.5	22 200
		11.0	77.7	46.3	19 300
		12.0	76.4	46.1	17 000
		14.0	73.8	45.6	13 500
		16.0	71.2	44.9	11 000
		18.0	68.5	44.2	9 200
		20.0	65.8	43.3	7 800
		22.0	63.0	42.3	6 600
		24.0	60.1	41.2	5 700
		26.0	57.2	40.0	4 900
		28.0	54.1	38.6	4 200
		30.0	50.9	37.0	3 700
		32.0	47.6	35.3	3 200
		34.0	44.1	33.3	2 800
		36.0	40.3	31.1	2 400
		38.0	36.3	28.5	2 100
		40.0	31.7	25.5	1 800
42.0	26.5	21.9	1 500		

BOOM LGTH. METERS	BOOM LGTH. FEET	OPER. RADIUS METERS	BOOM ANG. DEG.	BOOM POINT ELEV. METERS	CAPACITY KILOGRAMS
4 8 8	1 6 0	8.2	81.8	50.0	27 800*
		9.0	80.9	49.8	25 900
		10.0	79.7	49.7	22 100
		11.0	78.5	49.5	19 200
		12.0	77.3	49.2	16 900
		14.0	74.8	48.7	13 400
		16.0	72.4	48.1	10 900
		18.0	69.9	47.4	9 100
		20.0	67.4	46.6	7 600
		22.0	64.8	45.7	6 500
		24.0	62.2	44.7	5 600
		26.0	59.4	43.6	4 800
		28.0	56.7	42.3	4 100
		30.0	53.8	40.9	3 500
		32.0	50.8	39.3	3 000
		34.0	47.7	37.6	2 600
		36.0	44.4	35.7	2 300
		38.0	40.9	33.5	1 900
		40.0	37.2	31.0	1 600
		5 1 8	1 7 0	8.5	82.0
9.0	81.4			52.9	24 100*
10.0	80.3			52.8	22 100
11.0	79.1			52.6	19 100
12.0	78.0			52.4	16 700
14.0	75.7			51.9	13 200
16.0	73.4			51.3	10 700
18.0	71.1			50.7	8 900
20.0	68.8			49.9	7 400
22.0	66.4			49.1	6 300
24.0	63.9			48.1	5 400
26.0	61.4			47.1	4 600
28.0	58.9			45.9	3 900
30.0	56.2			44.6	3 400
32.0	53.5			43.2	2 900
34.0	50.7			41.6	2 500
36.0	47.8			39.9	2 100
38.0	44.7			38.0	1 700
40.0	41.4			35.8	1 400
5 4 9	1 8 0			8.8	82.1
		9.0	81.9	56.0	21 100*
		10.0	80.8	55.8	20 900*
		11.0	79.8	55.7	18 900
		12.0	78.7	55.5	16 600
		14.0	76.6	55.0	13 100
		16.0	74.4	54.5	10 600
		18.0	72.2	53.9	8 800
		20.0	70.0	53.2	7 400
		22.0	67.8	52.4	6 200
		24.0	65.5	51.5	5 200
		26.0	63.1	50.5	4 500
		28.0	60.8	49.5	3 800
		30.0	58.3	48.3	3 200
		32.0	55.9	47.0	2 800
		34.0	53.3	45.5	2 300
		36.0	50.6	43.9	2 000
		38.0	47.8	42.2	1 600

MANITOWOC M-85w – Liftcrane capacities boom no. 47

3 080 KG CRAWLER FRAME COUNTERWEIGHT

21 090 KG COUNTERWEIGHT

6 807 MM CRAWLERS EXTENDED

360° RATING

BOOM LGTH. METERS	BOOM LGTH. FEET	OPER. RADIUS METERS	BOOM ANG. DEG.	BOOM POINT ELEV. METERS	CAPACITY KILOGRAMS
57.9	190	9.8	81.5	59.0	18 500*
		10.0	81.3	58.9	18 500*
		11.0	80.3	58.8	18 300*
		12.0	79.3	58.6	16 600
		14.0	77.3	58.2	13 000
		16.0	75.2	57.7	10 500
		18.0	73.2	57.1	8 700
		20.0	71.1	56.4	7 200
		22.0	69.0	55.7	6 100
		24.0	66.8	54.9	5 100
		26.0	64.7	53.9	4 400
		28.0	62.5	52.9	3 700
		30.0	60.2	51.8	3 200
		32.0	57.9	50.6	2 700
		34.0	55.5	49.3	2 200
		36.0	53.1	47.8	1 900
		38.0	50.5	46.3	1 500
61.0	200	9.8	81.9	62.0	16 100*
		10.0	81.7	62.0	16 100*
		11.0	80.8	61.9	16 000*
		12.0	79.8	61.7	15 900*
		14.0	77.9	61.3	12 900
		16.0	76.0	60.8	10 400
		18.0	74.0	60.3	8 600
		20.0	72.1	59.6	7 100
		22.0	70.1	58.9	5 900
		24.0	68.1	58.2	5 000
		26.0	66.0	57.3	4 200
		28.0	63.9	56.4	3 600
		30.0	61.8	55.3	3 000
32.0	59.7	54.2	2 500		
34.0	57.5	53.0	2 100		
36.0	55.2	51.6	1 700		
38.0	52.9	50.1	1 400		

BOOM LGTH. METERS	BOOM LGTH. FEET	OPER. RADIUS METERS	BOOM ANG. DEG.	BOOM POINT ELEV. METERS	CAPACITY KILOGRAMS
64.0	210	10.4	81.8	65.0	14 200*
		11.0	81.2	64.9	14 100*
		12.0	80.3	64.8	14 000*
		14.0	78.5	64.4	12 900
		16.0	76.7	63.9	10 200
		18.0	74.8	63.4	8 400
		20.0	73.0	62.8	6 900
		22.0	71.1	62.2	5 800
		24.0	69.2	61.4	4 900
		26.0	67.2	60.6	4 100
		28.0	65.3	59.7	3 400
		30.0	63.3	58.8	2 800
		32.0	61.3	57.7	2 400
34.0	59.2	56.6	1 900		
36.0	57.1	55.3	1 500		

MANITOWOC M-85W – Liftcrane jib capacities jib no. 131

with 3 658mm strut on boom no. 47 3 080 KG CRAWLER FRAME COUNTERWEIGHT

21 090 KG COUNTERWEIGHT

6 807 MM CRAWLERS EXTENDED

360° RATING

Chart supplements boom capacity chart no. 7534-AM. Capacities for various boom lengths, jib lengths and jib operating radii are for freely suspended loads and are calculated to comply with BS 1757-1986 clause 9, I.S.O. 4305 and BS 2573 part 1 – 1983 tables 5(a) and 6(a). Capacities based on structural competence are denoted by an asterisk(*).

Weight of all load blocks, hooks, weight ball, slings hoist lines, etc., beneath boom and jib point sheaves, is considered part of the jib load. Boom and jib are not to be lowered beyond radii where combined weights are greater than rated capacity. Where no capacity is shown, operation is not intended or approved.

Machine to operate in a level position on a firm uniformly supporting surface with crawlers fully extended (5 093mm) and gantry up. Refer to boom rigging no. 169352, jib assembly no. 169356 and wire rope specification chart no. 7554-A. Crane operator judgement must be used to allow for dynamic load effects of swinging, hoisting or lowering, travel, wind conditions, as well as adverse operating conditions and physical machine depreciation.

Machine may be operated in winds up to those shown in table provided crane operator judgement is used to allow for wind effect on the lifted load and

other considerations noted on the capacity chart are followed. Wind will have a considerable effect on a load with a large 'sail area' and must be compensated for accordingly by reducing load ratings, reducing operating speeds or by a combination of both. Recommend stopping operation when wind is above those shown in table and tying off or lowering boom when wind is above 16 m/s.

Machine to travel on a firm, level and uniformly supporting surface and boom within the boom angle range shown in capacity chart.

Operating radius is the horizontal distance from the axis of rotation to the centre of vertical hoist line or load block. Boom angle is the angle between horizontal and centreline of boom butt and inserts, and is an indication of operating radius. In all cases, operating radius shall govern capacity. Jib point elevation is vertical distance from ground level to centreline of jib point shaft.

Machine equipped with 6 807mm extendible crawlers, 914mm treads, 5 791mm retractable gantry, 12 part boom hoist reeving, two 35mm boom pendants, 1st counterweight = 18 140kg, and 2nd counterweight = 2 950kg, and two 1 540kg crawler frame counterweights.

Maximum capacity on 22mm British Dyform 34LR 1960 N/mm² wire rope is 9 000kg.

WIND LIMITS DURING OPERATION		
MAXIMUM WIND VELOCITY	BOOM LENGTH	JIB LENGTH
m/e	METERS	METERS
14	27.4 - 45.7	9.1 - 18.3
10	48.8 - 51.8	9.1 - 18.3
10	54.9	9.1 - 15.2

MAXIMUM BOOM AND JIB LENGTHS LIFTED UNASSISTED			
OVER END OF BLOCKED CRAWLERS		OVER SIDE OF EXTENDED CRAWLERS	
BOOM LGTH.	JIB NO. 131	BOOM LGTH.	JIB NO. 131
64.0m	---	54.9m	---
61.0m	---	51.8m	---
57.9m	---	48.8m	15.2m
54.9m	15.2m	45.7m	18.3m
51.8m	18.3m		

LOAD BLOCK, HOOK AND WEIGHT BALL ON GROUND AT START.

9.1m (30 FT.) JIB

BOOM LGTH. METERS	BOOM LGTH. FEET	JIB OPER. RADIUS METERS	3 DEGREE OFFSET			15 DEGREE OFFSET			30 DEGREE OFFSET			JIB OPER. RADIUS METERS
			BOOM ANG. DEG.	JIB POINT ELEV. METERS	CAPACITY KILOGRAMS	BOOM ANG. DEG.	JIB POINT ELEV. METERS	CAPACITY KILOGRAMS	BOOM ANG. DEG.	JIB POINT ELEV. METERS	CAPACITY KILOGRAMS	
27.4	9.0	9.1	78.8	37.9	9 000*							9.1
		10.0	77.3	37.7	9 000*							10.0
		11.0	75.7	37.5	9 000*	78.6	37.2	9 000*				11.0
		12.0	74.1	37.2	9 000*	77.0	36.9	9 000*				12.0
		13.0	72.5	36.9	9 000*	75.3	36.6	9 000*	78.4	35.8	9 000*	13.0
		14.0	70.9	36.5	9 000*	73.7	36.2	9 000*	76.7	35.5	9 000*	14.0
		15.0	69.2	36.1	9 000*	72.0	35.8	9 000*	75.0	35.1	9 000*	15.0
		16.0	67.5	35.7	9 000*	70.3	35.4	9 000*	73.3	34.6	9 000*	16.0
		17.0	65.8	35.3	9 000*	68.6	35.0	9 000*	71.5	34.2	9 000*	17.0
		18.0	64.1	34.8	9 000*	66.9	34.5	9 000*	69.7	33.7	9 000*	18.0
		19.0	62.4	34.2	9 000*	65.1	33.9	9 000*	67.9	33.1	9 000*	19.0
		20.0	60.6	33.7	8 900	63.3	33.4	8 900*	66.1	32.5	8 900*	20.0
		21.0	58.8	33.1	8 300	61.5	32.8	8 400	64.2	31.9	8 600	21.0
		22.0	56.9	32.4	7 700	59.6	32.1	7 900	62.3	31.2	8 100	22.0
		24.0	53.1	31.0	6 800	55.7	30.6	6 900	58.3	29.7	7 100	24.0
		26.0	49.1	29.3	6 000	51.7	28.9	6 100	54.1	28.0	6 200	26.0
28.0	44.8	27.3	5 300	47.3	27.0	5 400	49.5	25.9	5 500	28.0		
30.0	40.1	25.1	4 700	42.5	24.7	4 800				30.0		
34.0	28.8	19.0	3 800							34.0		

MANITOWOC M-85w – Liftcrane jib capacities jib no. 131

with 3 658mm strut on boom no. 47 3 080 KG CRAWLER FRAME COUNTERWEIGHT

21 090 KG COUNTERWEIGHT

6 807 MM CRAWLERS EXTENDED

360° RATING

9.1m (30 FT) JIB

BOOM LGTH. METERS	BOOM LGTH. FEET	JIB OPER. RADIUS METERS	3 DEGREE OFFSET			15 DEGREE OFFSET			30 DEGREE OFFSET			JIB OPER. RADIUS METERS			
			BOOM ANG. DEG.	JIB POINT ELEV. METERS	CAPACITY KILOGRAMS	BOOM ANG. DEG.	JIB POINT ELEV. METERS	CAPACITY KILOGRAMS	BOOM ANG. DEG.	JIB POINT ELEV. METERS	CAPACITY KILOGRAMS				
5.03	10.0	9.1	79.6	41.0	9 000*							9.1			
		10.0	78.3	40.9	9 000*							10.0			
		11.0	76.8	40.6	9 000*	79.5	40.3	9 000*				11.0			
		12.0	75.4	40.4	9 000*	78.0	40.1	9 000*				12.0			
		13.0	73.9	40.1	9 000*	76.5	39.8	9 000*			39.0	9 000*	13.0		
		14.0	72.4	39.7	9 000*	75.0	39.5	9 000*	77.8	38.7	9 000*		14.0		
		15.0	70.9	39.4	9 000*	73.5	39.1	9 000*	76.2	38.3	9 000*		15.0		
		16.0	69.3	39.0	9 000*	71.9	38.7	9 000*	74.7	37.9	9 000*		16.0		
		17.0	67.8	38.6	9 000*	70.4	38.3	9 000*	73.1	37.5	9 000*		17.0		
		18.0	66.2	38.1	9 000*	68.8	37.9	9 000*	71.5	37.1	9 000*		18.0		
		19.0	64.6	37.7	8 900*	67.2	37.4	9 000*	69.8	36.6	9 000*		19.0		
		20.0	63.0	37.2	8 800	65.6	36.9	8 900*	68.2	36.0	8 900*		20.0		
		21.0	61.4	36.6	8 200	63.9	36.3	8 300	66.5	35.5	8 500		21.0		
		22.0	59.7	36.0	7 600	62.3	35.7	7 700	64.8	34.9	8 000		22.0		
		24.0	56.3	34.7	6 600	58.8	34.4	6 800	61.3	33.5	6 900		24.0		
		26.0	52.8	33.3	5 900	55.2	32.9	6 000	57.6	32.0	6 100		26.0		
		28.0	49.1	31.6	5 200	51.5	31.2	5 300	53.7	30.2	5 400		28.0		
		30.0	45.1	29.7	4 600	47.4	29.3	4 700	49.5	28.2	4 800		30.0		
		34.0	36.1	24.8	3 700	38.3	24.4	3 800					34.0		
		38.0	24.4	17.7	3 000								38.0		
		5.33	10.1	9.1	80.4	44.1	9 000*							9.1	
				10.0	79.1	44.0	9 000*							10.0	
				11.0	77.8	43.8	9 000*	80.2	43.5	9 000*				11.0	
				12.0	76.4	43.5	9 000*	78.9	43.2	9 000*				12.0	
				13.0	75.0	43.2	9 000*	77.5	43.0	9 000*				13.0	
				14.0	73.7	42.9	9 000*	76.1	42.7	9 000*	78.7	41.9	9 000*		14.0
				15.0	72.3	42.6	9 000*	74.7	42.3	9 000*	77.3	41.5	9 000*		15.0
				16.0	70.9	42.3	9 000*	73.3	42.0	9 000*	75.8	41.2	9 000*		16.0
				17.0	69.4	41.9	9 000*	71.8	41.6	9 000*	74.4	40.8	9 000*		17.0
				18.0	68.0	41.5	9 000*	70.4	41.2	9 000*	72.9	40.4	9 000*		18.0
				19.0	66.6	41.0	8 900*	68.9	40.7	9 000*	71.4	39.9	9 000*		19.0
				20.0	65.1	40.6	8 700	67.5	40.3	8 900	69.9	39.4	8 900*		20.0
				21.0	63.6	40.1	8 100	66.0	39.8	8 300	68.4	38.9	8 400		21.0
				22.0	62.1	39.5	7 400	64.4	39.2	7 700	66.8	38.4	7 800		22.0
				24.0	59.0	38.4	6 500	61.3	38.1	6 700	63.7	37.2	6 800		24.0
				26.0	55.8	37.1	5 700	58.1	36.7	5 900	60.4	35.8	6 000		26.0
				28.0	52.5	35.6	5 000	54.8	35.2	5 200	56.9	34.3	5 300		28.0
				30.0	49.1	33.9	4 500	51.3	33.5	4 600	53.3	32.5	4 700		30.0
34.0	41.5			29.8	3 500	43.6	29.4	3 600					34.0		
38.0	32.4			24.3	2 800	34.4	23.8	2 900					38.0		
6.63	10.2			9.1	81.0	47.2	9 000*							9.1	
				10.0	79.9	47.1	9 000*							10.0	
				11.0	78.6	46.9	9 000*							11.0	
				12.0	77.3	46.6	9 000*							12.0	
				13.0	76.1	46.4	9 000*	78.3	46.1	9 000*				13.0	
				14.0	74.8	46.1	9 000*	77.0	45.8	9 000*	79.5	45.1	9 000*		14.0
				15.0	73.5	45.8	9 000*	75.7	45.5	9 000*	78.2	44.7	9 000*		15.0
				16.0	72.2	45.5	9 000*	74.4	45.2	9 000*	76.9	44.4	9 000*		16.0
				17.0	70.9	45.1	9 000*	73.1	44.9	9 000*	75.5	44.1	9 000*		17.0
				18.0	69.5	44.8	9 000*	71.8	44.5	9 000*	74.1	43.7	9 000*		18.0
				19.0	68.2	44.4	8 800*	70.4	44.1	8 900*	72.8	43.2	9 000*		19.0
				20.0	66.8	43.9	8 500	69.1	43.6	8 800	71.4	42.8	8 900*		20.0
				21.0	65.5	43.5	7 900	67.7	43.2	8 200	70.0	42.3	8 300		21.0
				22.0	64.1	43.0	7 300	66.3	42.7	7 500	68.6	41.8	7 700		22.0
				24.0	61.3	41.9	6 400	63.5	41.6	6 500	65.7	40.7	6 700		24.0
				26.0	58.4	40.7	5 600	60.5	40.4	5 700	62.7	39.5	5 900		26.0
				28.0	55.4	39.4	4 900	57.5	39.0	5 100	59.6	38.1	5 200		28.0
				30.0	52.3	37.9	4 300	54.4	37.5	4 500	56.4	36.5	4 600		30.0
		34.0	45.6	34.3	3 400	47.7	33.9	3 500	49.4	32.8	3 600		34.0		
		38.0	38.1	29.7	2 700	40.0	29.2	2 700					38.0		
		42.0	28.9	23.4	2 100								42.0		

MANITOWOC M-85W – Liftcrane jib capacities jib no. 131

with 3 658mm strut on boom no. 47 3 080 KG CRAWLER FRAME COUNTERWEIGHT

21 090 KG COUNTERWEIGHT

6 807 MM CRAWLERS EXTENDED

360° RATING

9.1m (30 FT) JIB

BOOM LGTH. METERS	BOOM LGTH. FEET	3 DEGREE OFFSET				15 DEGREE OFFSET				30 DEGREE OFFSET				JIB OPER. RADIUS METERS
		JIB OPER. RADIUS METERS	BOOM ANG. DEG.	JIB POINT ELEV. METERS	CAPACITY KILOGRAMS	BOOM ANG. DEG.	JIB POINT ELEV. METERS	CAPACITY KILOGRAMS	BOOM ANG. DEG.	JIB POINT ELEV. METERS	CAPACITY KILOGRAMS			
396	130	10.7	79.7	50.0	9 000*									10.7
		11.0	79.3	50.0	9 000*									11.0
		12.0	78.1	49.8	9 000*									12.0
		13.0	76.9	49.5	9 000*	79.1	49.3	9 000*						13.0
		14.0	75.7	49.3	9 000*	77.9	49.0	9 000*	80.2	48.2	9 000*			14.0
		15.0	74.5	49.0	9 000*	76.7	48.7	9 000*	79.0	47.9	9 000*	15.0		
		16.0	73.3	48.7	9 000*	75.4	48.4	9 000*	77.7	47.6	9 000*	16.0		
		17.0	72.1	48.4	9 000*	74.2	48.1	9 000*	76.5	47.3	9 000*	17.0		
		18.0	70.9	48.0	9 000*	73.0	47.7	9 000*	75.2	46.9	9 000*	18.0		
		19.0	69.6	47.6	8 700*	71.7	47.3	8 900*	73.9	46.5	9 000*	19.0		
		20.0	68.4	47.2	8 300*	70.5	46.9	8 600*	72.6	46.1	8 900*	20.0		
		21.0	67.1	46.8	7 700*	69.2	46.5	8 000*	71.3	45.7	8 300*	21.0		
		22.0	65.8	46.4	7 100*	67.9	46.1	7 400*	70.0	45.2	7 600*	22.0		
		24.0	63.2	45.4	6 200*	65.3	45.1	6 400*	67.4	44.2	6 600*	24.0		
		26.0	60.6	44.3	5 400*	62.6	44.0	5 600*	64.6	43.1	5 800*	26.0		
		28.0	57.8	43.1	4 700*	59.8	42.7	4 900*	61.8	41.8	5 100*	28.0		
		30.0	55.0	41.7	4 200*	57.0	41.3	4 300*	58.9	40.4	4 400*	30.0		
		34.0	49.0	38.5	3 200*	51.0	38.1	3 300*	52.7	37.1	3 400*	34.0		
38.0	42.5	34.5	2 500*	44.3	34.0	2 600*				38.0				
42.0	34.9	29.3	1 900*	36.6	28.8	2 000*				42.0				
46.0	25.4	22.2	1 500*							46.0				
427	140	10.7	80.3	53.2	9 000*								10.7	
		11.0	80.0	53.1	9 000*								11.0	
		12.0	78.8	52.9	9 000*								12.0	
		13.0	77.7	52.7	9 000*	79.7	52.4	9 000*					13.0	
		14.0	76.6	52.4	9 000*	78.6	52.1	9 000*					14.0	
		15.0	75.5	52.2	9 000*	77.5	51.9	9 000*					15.0	
		16.0	74.3	51.9	9 000*	76.3	51.6	9 000*	78.5	50.8	9 000*	16.0		
		17.0	73.2	51.6	9 000*	75.2	51.3	9 000*	77.3	50.5	9 000*	17.0		
		18.0	72.0	51.3	9 000*	74.0	51.0	9 000*	76.1	50.1	9 000*	18.0		
		19.0	70.9	50.9	8 700*	72.8	50.6	8 800*	74.9	49.8	9 000*	19.0		
		20.0	69.7	50.5	8 200*	71.7	50.2	8 500*	73.7	49.4	8 800*	20.0		
		21.0	68.5	50.1	7 600*	70.5	49.8	7 900*	72.5	49.0	8 200*	21.0		
		22.0	67.3	49.7	7 000*	69.3	49.4	7 200*	71.3	48.6	7 500*	22.0		
		24.0	64.9	48.8	6 100*	66.9	48.5	6 300*	68.8	47.6	6 500*	24.0		
		26.0	62.4	47.8	5 300*	64.4	47.5	5 400*	66.3	46.6	5 700*	26.0		
		28.0	59.9	46.6	4 600*	61.8	46.3	4 800*	63.7	45.4	4 900*	28.0		
		30.0	57.3	45.4	4 000*	59.2	45.0	4 200*	61.1	44.1	4 300*	30.0		
		34.0	51.9	42.5	3 100*	53.8	42.1	3 200*	55.5	41.1	3 300*	34.0		
38.0	46.0	38.9	2 400*	47.8	38.5	2 500*	49.4	37.4	2 600*	38.0				
42.0	39.5	34.5	1 800*	41.2	34.0	1 900*				42.0				
457	150	10.7	80.8	56.2	9 000*								10.7	
		11.0	80.5	56.2	9 000*								11.0	
		12.0	79.5	56.0	9 000*								12.0	
		13.0	78.4	55.8	9 000*								13.0	
		14.0	77.3	55.6	9 000*	79.2	55.3	9 000*					14.0	
		15.0	76.3	55.3	9 000*	78.2	55.0	9 000*					15.0	
		16.0	75.2	55.1	9 000*	77.1	54.8	9 000*	79.1	53.9	9 000*	16.0		
		17.0	74.1	54.8	9 000*	76.0	54.5	9 000*	78.0	53.7	9 000*	17.0		
		18.0	73.0	54.5	9 000*	74.9	54.2	9 000*	76.9	53.3	9 000*	18.0		
		19.0	72.0	54.1	8 600*	73.8	53.8	8 800*	75.8	53.0	8 900*	19.0		
		20.0	70.9	53.8	8 100*	72.7	53.5	8 400*	74.7	52.6	8 700*	20.0		
		21.0	69.8	53.4	7 500*	71.6	53.1	7 800*	73.6	52.3	8 100*	21.0		
		22.0	68.6	53.0	6 900*	70.5	52.7	7 200*	72.4	51.9	7 500*	22.0		
		24.0	66.4	52.2	6 000*	68.2	51.8	6 200*	70.1	51.0	6 400*	24.0		
		26.0	64.1	51.2	5 100*	65.9	50.9	5 400*	67.8	50.0	5 600*	26.0		
		28.0	61.8	50.2	4 500*	63.6	49.8	4 700*	65.4	48.9	4 800*	28.0		
		30.0	59.4	49.0	3 900*	61.2	48.7	4 100*	62.9	47.7	4 200*	30.0		
		34.0	54.4	46.3	3 000*	56.1	46.0	3 100*	57.8	45.0	3 200*	34.0		
38.0	49.0	43.1	2 200*	50.8	42.7	2 400*	52.3	41.6	2 500*	38.0				
42.0	43.2	39.1	1 700*	44.9	38.7	1 700*				42.0				

MANITOWOC M-85w – Liftcrane jib capacities jib no. 131

with 3 658mm strut on boom no. 47 3 080 KG CRAWLER FRAME COUNTERWEIGHT

21 090 KG COUNTERWEIGHT

6 807 MM CRAWLERS EXTENDED

360° RATING

9.1m (30 FT) JIB

BOOM LGTH. METERS	BOOM LGTH. FEET	3 DEGREE OFFSET				15 DEGREE OFFSET				30 DEGREE OFFSET				JIB OPER. RADIUS METERS
		JIB OPER. RADIUS METERS	JIB POINT ELEV. METERS	CAPACITY KILOGRAMS		BOOM ANG. DEG.	JIB POINT ELEV. METERS	CAPACITY KILOGRAMS		BOOM ANG. DEG.	JIB POINT ELEV. METERS	CAPACITY KILOGRAMS		
48.8	16.0	12.2	79.8	59.1	9 000*									12.2
		13.0	79.0	58.9	9 000*									13.0
		14.0	78.0	58.7	9 000*	79.8	58.4	9 000*						14.0
		15.0	77.0	58.5	9 000*	78.8	58.2	9 000*						15.0
		16.0	76.0	58.2	9 000*	77.8	57.9	9 000*	79.7	57.1	9 000*			16.0
		17.0	75.0	57.9	9 000*	76.8	57.6	9 000*	78.7	56.8	9 000*			17.0
		18.0	74.0	57.7	9 000*	75.7	57.3	9 000*	77.7	56.5	9 000*			18.0
		19.0	72.9	57.3	8 600*	74.7	57.0	8 700*	76.6	56.2	8 900*			19.0
		20.0	71.9	57.0	8 000*	73.7	56.7	8 300*	75.6	55.9	8 600*			20.0
		21.0	70.9	56.7	7 300*	72.6	56.4	7 700*	74.5	55.5	8 000*			21.0
		22.0	69.8	56.3	6 800*	71.6	56.0	7 100*	73.4	55.1	7 300*			22.0
		24.0	67.7	55.5	5 800*	69.4	55.2	6 100*	71.3	53.4	6 300*			24.0
		26.0	65.5	54.6	5 000*	67.3	54.3	5 200*	69.1	53.3	5 400*			26.0
		28.0	63.4	53.6	4 400*	65.1	53.3	4 500*	66.8	52.4	4 700*			28.0
30.0	61.1	52.5	3 800*	62.8	52.2	3 900*	64.5	51.3	4 100*			30.0		
34.0	56.5	50.0	2 800*	58.2	49.7	3 000*	59.8	48.7	3 100*			34.0		
38.0	51.6	47.1	2 100*	53.3	46.7	2 200*	54.8	45.7	2 300*			38.0		
42.0	46.4	43.5	1 500*	48.0	43.1	1 600*	49.3	42.0	1 700*			42.0		
51.8	17.0	12.2	80.3	62.2	9 000*									12.2
		13.0	79.6	62.0	9 000*									13.0
		14.0	78.6	61.8	9 000*	80.3	61.5	9 000*						14.0
		15.0	77.7	61.6	9 000*	79.4	61.3	9 000*						15.0
		16.0	76.7	61.4	9 000*	78.4	61.1	9 000*						16.0
		17.0	75.7	61.1	9 000*	77.4	60.8	9 000*	79.3	60.0	9 000*			17.0
		18.0	74.8	60.8	9 000*	76.5	60.5	9 000*	78.3	59.7	9 000*			18.0
		19.0	73.8	60.5	8 500*	75.5	60.2	8 700*	77.3	59.4	8 800*			19.0
		20.0	72.8	60.2	7 800*	74.5	59.9	8 100*	76.3	59.1	8 500*			20.0
		21.0	71.8	59.9	7 200*	73.5	59.6	7 500*	75.3	58.7	7 900*			21.0
		22.0	70.9	59.5	6 600*	72.5	59.2	6 900*	74.3	58.4	7 200*			22.0
		24.0	68.9	58.8	5 600*	70.5	58.5	5 900*	72.3	57.6	6 200*			24.0
		26.0	66.8	57.9	4 900*	68.5	57.6	5 100*	70.2	56.8	5 400*			26.0
		28.0	64.8	57.0	4 200*	66.4	56.7	4 400*	68.1	55.8	4 600*			28.0
30.0	62.7	56.0	3 600*	64.3	55.7	3 800*	66.0	54.8	4 000*			30.0		
34.0	58.4	53.7	2 700*	60.0	53.3	2 800*	61.5	52.4	3 000*			34.0		
38.0	53.8	50.9	2 000*	55.4	50.6	2 100*	56.9	49.6	2 200*			38.0		
42.0				50.6	47.3	1 500*	51.9	46.2	1 600*			42.0		
54.9	18.0	12.2	80.8	65.3	9 000*									12.2
		13.0	80.1	65.1	9 000*									13.0
		14.0	79.2	64.9	9 000*									14.0
		15.0	78.3	64.7	9 000*									15.0
		16.0	77.3	64.5	9 000*	79.0	64.2	9 000*						16.0
		17.0	76.4	64.2	9 000*	78.1	63.9	9 000*	79.8	63.1	9 000*			17.0
		18.0	75.5	64.0	8 900*	77.1	63.7	9 000*	78.9	62.9	9 000*			18.0
		19.0	74.6	63.7	8 500*	76.2	63.4	8 600*	77.9	62.6	8 800*			19.0
		20.0	73.7	63.4	7 600*	75.3	63.1	8 000*	77.0	62.3	8 400*			20.0
		21.0	72.7	63.1	7 000*	74.3	62.8	7 400*	76.1	61.9	7 700*			21.0
		22.0	71.8	62.8	6 500*	73.4	62.5	6 800*	75.1	61.6	7 100*			22.0
		24.0	69.9	62.1	5 500*	71.5	61.7	5 800*	73.2	60.9	6 100*			24.0
		26.0	68.0	61.3	4 700*	69.6	60.9	4 900*	71.2	60.1	5 200*			26.0
		28.0	66.1	60.4	4 000*	67.6	60.1	4 300*	69.2	59.2	4 500*			28.0
30.0	64.1	59.4	3 500*	65.7	59.1	3 700*	67.2	58.2	3 900*			30.0		
34.0	60.0	57.3	2 500*	61.6	56.9	2 700*	63.1	56.0	2 900*			34.0		
38.0	55.8	54.7	1 800*	57.3	54.3	2 000*	58.8	53.4	2 100*			38.0		
42.0							54.2	50.3	1 500*			42.0		

MANITOWOC M-85W – Liftcrane jib capacities jib no. 131

with 3 658mm strut on boom no. 47 3 080 KG CRAWLER FRAME COUNTERWEIGHT

21 090 KG COUNTERWEIGHT

6 807 MM CRAWLERS EXTENDED

360° RATING

12.2m (40 FT) JIB

BOOM LGTH. METERS	BOOM LGTH. FEET	JIB OPER. RADIUS METERS	3 DEGREE OFFSET			15 DEGREE OFFSET			30 DEGREE OFFSET			JIB OPER. RADIUS METERS	
			BOOM ANG. DEG.	JIB POINT ELEV. METERS	CAPACITY KILOGRAMS	BOOM ANG. DEG.	JIB POINT ELEV. METERS	CAPACITY KILOGRAMS	BOOM ANG. DEG.	JIB POINT ELEV. METERS	CAPACITY KILOGRAMS		
27.4	90	9.1	80.2	41.0	9 000*							9.1	
		10.0	78.8	40.8	9 000*							10.0	
		11.0	77.4	40.6	9 000*							11.0	
		12.0	75.9	40.3	9 000*							12.0	
		13.0	74.4	40.0	9 000*				77.9	39.7	9 000*		13.0
		14.0	72.9	39.7	9 000*	76.4	39.4	9 000*	80.2	38.4	9 000*	14.0	
		15.0	71.4	39.4	9 000*	74.9	39.0	9 000*	78.7	38.0	9 000*	15.0	
		16.0	69.9	39.0	9 000*	73.3	38.6	9 000*	77.1	37.7	9 000*	16.0	
		17.0	68.3	38.6	9 000*	71.8	38.2	9 000*	75.5	37.2	9 000*	17.0	
		18.0	66.7	38.1	9 000*	70.2	37.8	9 000*	73.8	36.8	9 000*	18.0	
		19.0	65.2	37.7	9 000*	68.6	37.3	9 000*	72.2	36.3	9 000*	19.0	
		20.0	63.6	37.1	8 900*	67.0	36.8	8 900*	70.5	35.7	8 900*	20.0	
		21.0	61.9	36.6	8 400	65.3	36.2	8 600	68.8	35.2	8 700*	21.0	
		22.0	60.3	36.0	7 900	63.6	35.6	8 100	67.1	34.6	8 300*	22.0	
		24.0	56.9	34.7	6 900	60.2	34.3	7 100	63.5	33.2	7 300	24.0	
		26.0	53.3	33.2	6 100	56.6	32.8	6 300	59.8	31.6	6 400	26.0	
28.0	49.6	31.6	5 400	52.8	31.1	5 600	55.9	29.9	5 700	28.0			
30.0	45.6	29.6	4 900	48.8	29.1	5 000	51.6	27.8	5 100	30.0			
34.0	36.6	24.8	3 900	39.6	24.2	4 000				34.0			
38.0	24.9	17.7	3 200							38.0			
35.0	100	9.1	80.9	44.1	9 000*							9.1	
		10.0	79.6	44.0	9 000*							10.0	
		11.0	78.3	43.7	9 000*							11.0	
		12.0	76.9	43.5	9 000*							12.0	
		13.0	75.5	43.2	9 000*							13.0	
		14.0	74.2	42.9	9 000*	77.4	42.6	9 000*				14.0	
		15.0	72.8	42.6	9 000*	76.0	42.2	9 000*				15.0	
		16.0	71.3	42.3	9 000*	74.6	41.9	9 000*	78.1	40.9	9 000*	16.0	
		17.0	69.9	41.9	9 000*	73.1	41.5	9 000*	76.6	40.5	9 000*	17.0	
		18.0	68.5	41.5	9 000*	71.7	41.1	9 000*	75.1	40.1	9 000*	18.0	
		19.0	67.0	41.0	9 000*	70.2	40.6	9 000*	73.6	39.6	9 000*	19.0	
		20.0	65.6	40.6	8 900	68.7	40.2	8 900*	72.1	39.1	9 000*	20.0	
		21.0	64.1	40.1	8 300	67.2	39.7	8 500	70.6	38.6	8 700	21.0	
		22.0	62.6	39.5	7 700	65.7	39.1	8 000	69.0	38.1	8 200	22.0	
		24.0	59.5	38.4	6 700	62.6	37.9	7 000	65.8	36.8	7 200	24.0	
		26.0	56.3	37.0	5 900	59.4	36.6	6 100	62.5	35.5	6 300	26.0	
28.0	53.0	35.5	5 300	56.0	35.1	5 400	59.0	33.9	5 600	28.0			
30.0	49.5	33.9	4 700	52.5	33.4	4 800	55.3	32.1	5 000	30.0			
34.0	41.9	29.8	3 800	44.8	29.2	3 900				34.0			
38.0	32.9	24.3	3 000	35.5	23.6	3 100				38.0			
53.3	110	10.7	79.4	46.9	9 000*							10.7	
		11.0	79.1	46.9	9 000*							11.0	
		12.0	77.8	46.6	9 000*							12.0	
		13.0	76.5	46.4	9 000*	79.6	46.0	9 000*				13.0	
		14.0	75.2	46.1	9 000*	78.3	45.7	9 000*				14.0	
		15.0	73.9	45.8	9 000*	77.0	45.4	9 000*				15.0	
		16.0	72.6	45.5	9 000*	75.6	45.1	9 000*	78.9	44.1	9 000*	16.0	
		17.0	71.3	45.1	9 000*	74.3	44.7	9 000*	77.6	43.7	9 000*	17.0	
		18.0	70.0	44.8	9 000*	73.0	44.4	9 000*	76.2	43.3	9 000*	18.0	
		19.0	68.6	44.4	8 900*	71.6	44.0	9 000*	74.8	42.9	9 000*	19.0	
		20.0	67.3	43.9	8 800	70.3	43.5	8 900*	73.4	42.5	9 000*	20.0	
		21.0	65.9	43.5	8 200	68.9	43.1	8 400	72.0	42.0	8 600	21.0	
		22.0	64.6	43.0	7 600	67.5	42.6	7 800	70.6	41.5	8 100	22.0	
		24.0	61.7	41.9	6 600	64.7	41.5	6 800	67.7	40.4	7 100	24.0	
		26.0	58.8	40.7	5 800	61.7	40.3	6 000	64.6	39.1	6 200	26.0	
		28.0	55.9	39.4	5 100	58.7	38.9	5 300	61.5	37.7	5 500	28.0	
30.0	52.7	37.8	4 600	55.6	37.4	4 700	58.5	36.2	4 900	30.0			
34.0	46.1	34.3	3 600	48.8	33.7	3 700	51.2	32.4	3 900	34.0			
38.0	38.5	29.7	2 900	41.1	29.1	3 000				38.0			
42.0	29.3	23.4	2 300							42.0			

MANITOWOC M-85w – Liftcrane jib capacities jib no. 131

with 3 658mm strut on boom no. 47 3 080 KG CRAWLER FRAME COUNTERWEIGHT

21 090 KG COUNTERWEIGHT

6 807 MM CRAWLERS EXTENDED

360° RATING

12.2m (40 FT) JIB

BOOM LGTH. METERS	BOOM LGTH. FEET	JIB OPER. RADIUS METERS	3 DEGREE OFFSET			15 DEGREE OFFSET			30 DEGREE OFFSET			JIB OPER. RADIUS METERS
			BOOM ANG. DEG.	JIB POINT ELEV. METERS	CAPACITY KILOGRAMS	BOOM ANG. DEG.	JIB POINT ELEV. METERS	CAPACITY KILOGRAMS	BOOM ANG. DEG.	JIB POINT ELEV. METERS	CAPACITY KILOGRAMS	
6.6	20	10.7	80.1	50.0	9 000*							10.7
		11.0	79.8	50.0	9 000*							11.0
		12.0	78.6	49.8	9 000*							12.0
		13.0	77.4	49.5	9 000*							13.0
		14.0	76.2	49.3	9 000*							14.0
		15.0	75.0	49.0	9 000*	79.0	48.9	9 000*				15.0
		16.0	73.7	48.7	9 000*	77.8	48.6	9 000*	79.7	47.3	9 000*	16.0
		17.0	72.5	48.4	9 000*	76.6	48.3	9 000*	78.4	46.9	9 000*	17.0
		18.0	71.3	48.0	9 000*	75.3	48.0	9 000*	77.1	46.6	9 000*	18.0
		19.0	70.0	47.6	8 900*	74.1	47.6	9 000*	75.9	46.2	9 000*	19.0
		20.0	68.8	47.2	8 600	72.8	47.2	8 900*	74.6	45.8	8 900*	20.0
		21.0	67.5	46.8	8 000	71.6	46.8	8 300	73.3	45.3	8 500	21.0
		22.0	66.2	46.4	7 400	70.3	46.4	7 700	71.9	44.9	8 000	22.0
		24.0	63.6	45.4	6 500	69.0	45.9	6 700	69.2	43.9	7 000	24.0
		26.0	61.0	44.3	5 700	66.4	45.0	5 900	66.5	42.7	6 100	26.0
		28.0	58.3	43.0	5 000	63.7	43.8	5 200	63.6	41.4	5 400	28.0
		30.0	55.4	41.7	4 400	60.9	42.6	4 600	60.7	40.0	4 800	30.0
		34.0	49.5	38.5	3 500	58.1	41.2	3 600	54.5	36.6	3 700	34.0
		38.0	42.9	34.5	2 800	52.0	38.0	2 900	47.5	32.4	3 000	38.0
		42.0	35.3	29.3	2 200	45.4	33.9	2 300				42.0
46.0	25.8	22.2	1 700	37.6	28.6					46.0		
6.9	30	10.7	80.7	53.1	9 000*							10.7
		11.0	80.4	53.1	9 000*							11.0
		12.0	79.2	52.9	9 000*							12.0
		13.0	78.1	52.7	9 000*							13.0
		14.0	77.0	52.4	9 000*	79.7	52.0	9 000*				14.0
		15.0	75.9	52.2	9 000*	78.5	51.8	9 000*				15.0
		16.0	74.7	51.9	9 000*	77.4	51.5	9 000*				16.0
		17.0	73.6	51.6	9 000*	76.2	51.2	9 000*	79.1	50.1	9 000*	17.0
		18.0	72.4	51.2	9 000*	75.1	50.8	9 000*	77.9	49.8	9 000*	18.0
		19.0	71.3	50.9	8 800*	73.9	50.5	9 000*	76.7	49.4	9 000*	19.0
		20.0	70.1	50.5	8 500	72.7	50.1	8 800	75.5	49.1	8 900*	20.0
		21.0	68.9	50.1	7 900	71.5	49.7	8 200	74.3	48.6	8 500	21.0
		22.0	67.7	49.7	7 300	70.3	49.3	7 600	73.1	48.2	7 900	22.0
		24.0	65.3	48.8	6 300	67.9	48.4	6 600	70.6	47.3	6 900	24.0
		26.0	62.8	47.8	5 500	65.4	47.3	5 800	68.1	46.2	6 000	26.0
		28.0	60.3	46.6	4 800	62.9	46.2	5 100	65.5	45.0	5 300	28.0
		30.0	57.7	45.4	4 200	60.3	44.9	4 400	62.8	43.7	4 700	30.0
		34.0	52.3	42.5	3 300	54.8	42.0	3 500	57.1	40.7	3 600	34.0
		38.0	46.4	38.9	2 600	48.8	38.3	2 700	50.9	36.9	2 800	38.0
		42.0	39.9	34.4	2 000	42.2	33.8	2 100				42.0
46.0	32.2	28.7	1 600							46.0		
4.27	140	12.2	79.6	56.0	9 000*							12.2
		13.0	78.8	55.8	9 000*							13.0
		14.0	77.7	55.6	9 000*	80.3	55.2	9 000*				14.0
		15.0	76.7	55.3	9 000*	79.2	54.9	9 000*				15.0
		16.0	75.6	55.0	9 000*	78.1	54.6	9 000*				16.0
		17.0	74.5	54.8	9 000*	77.0	54.4	9 000*	79.8	53.3	9 000*	17.0
		18.0	73.4	54.4	9 000*	75.9	54.0	9 000*	78.7	53.0	9 000*	18.0
		19.0	72.3	54.1	8 700*	74.8	53.7	8 900*	77.5	52.7	9 000*	19.0
		20.0	71.2	53.8	8 300	73.7	53.4	8 700	76.4	52.3	8 900*	20.0
		21.0	70.1	53.4	7 700	72.6	53.0	8 100	75.3	51.9	8 400	21.0
		22.0	69.0	53.0	7 100	71.5	52.6	7 500	74.1	51.5	7 800	22.0
		24.0	66.8	52.1	6 200	69.2	51.7	6 500	71.8	50.6	6 800	24.0
		26.0	64.5	51.2	5 400	66.9	50.8	5 600	69.4	49.6	5 900	26.0
		28.0	62.1	50.1	4 700	64.5	49.7	4 900	67.0	48.6	5 200	28.0
		30.0	59.7	49.0	4 100	62.1	48.5	4 300	64.5	47.3	4 500	30.0
		34.0	54.7	46.3	3 200	57.1	45.8	3 300	59.4	44.6	3 500	34.0
		38.0	49.4	43.1	2 500	51.7	42.5	2 600	53.8	41.2	2 700	38.0
		42.0	43.6	39.1	1 900	45.8	38.5	2 000	47.7	37.0	2 100	42.0
		46.0				39.1	33.6	1 500				46.0

MANITOWOC M-85W – Liftcrane jib capacities jib no. 131

with 3 658mm strut on boom no. 47 3 080 KG CRAWLER FRAME COUNTERWEIGHT

21 090 KG COUNTERWEIGHT

6 807 MM CRAWLERS EXTENDED

360° RATING

12.2m (40 FT) JIB

BOOM LGTH. METERS	BOOM LGTH. FEET	JIB OPER. RADIUS METERS	3 DEGREE OFFSET			15 DEGREE OFFSET			30 DEGREE OFFSET			JIB OPER. RADIUS METERS
			BOOM ANG. DEG.	JIB POINT ELEV. METERS	CAPACITY KILOGRAMS	BOOM ANG. DEG.	JIB POINT ELEV. METERS	CAPACITY KILOGRAMS	BOOM ANG. DEG.	JIB POINT ELEV. METERS	CAPACITY KILOGRAMS	
45.7	150	12.2	80.2	59.1	9 000*							12.2
		13.0	79.4	58.9	9 000*							13.0
		14.0	78.4	58.7	9 000*							14.0
		15.0	77.4	58.4	9 000*							15.0
		16.0	76.4	58.2	9 000*	78.8	57.8	9 000*				16.0
		17.0	75.3	57.9	9 000*	77.7	57.5	9 000*	80.3	56.5	9 000*	17.0
		18.0	74.3	57.6	9 000*	76.7	57.2	9 000*	79.3	56.2	9 000*	18.0
		19.0	73.3	57.3	8 700*	75.7	56.9	8 900*	78.2	55.8	9 000*	19.0
		20.0	72.3	57.0	8 200	74.6	56.6	8 600	77.2	55.5	8 900*	20.0
		21.0	71.2	56.6	7 600	73.6	56.2	8 000	76.1	55.2	8 300	21.0
		22.0	70.2	56.3	7 000	72.5	55.9	7 400	75.0	54.8	7 700	22.0
		24.0	68.1	55.5	6 100	70.4	55.0	6 400	72.9	53.9	6 700	24.0
		26.0	65.9	54.6	5 300	68.2	54.2	5 500	70.6	53.0	5 800	26.0
		28.0	63.7	53.6	4 600	66.0	53.2	4 800	68.4	52.0	5 100	28.0
		30.0	61.5	52.5	4 000	63.8	52.1	4 200	66.1	50.9	4 400	30.0
34.0	56.9	50.0	3 100	59.1	49.6	3 200	61.3	48.3	3 400	34.0		
38.0	52.0	47.1	2 300	54.2	46.6	2 500	56.2	45.2	2 600	38.0		
42.0	46.7	43.5	1 700	48.8	42.9	1 900	50.7	41.5	2 000	42.0		
48.8	160	12.2	80.7	62.0	9 000*							12.2
		13.0	79.9	62.0	9 000*							13.0
		14.0	79.0	61.8	9 000*							14.0
		15.0	78.0	61.6	9 000*							15.0
		16.0	77.0	61.3	9 000*	79.3	60.9	9 000*				16.0
		17.0	76.1	61.1	9 000*	78.4	60.7	9 000*				17.0
		18.0	75.1	60.8	9 000*	77.4	60.4	9 000*				18.0
		19.0	74.1	60.5	8 600*	76.4	60.1	8 800*	78.9	59.0	9 000*	19.0
		20.0	73.2	60.2	8 100	75.4	59.8	8 500	77.9	58.7	8 900*	20.0
		21.0	72.2	59.9	7 500	74.4	59.5	7 900	76.8	58.4	8 200	21.0
		22.0	71.2	59.5	6 900	73.4	59.1	7 200	75.8	58.0	7 600	22.0
		24.0	69.2	58.8	5 900	71.4	58.3	6 200	73.8	57.2	6 600	24.0
		26.0	67.2	57.9	5 100	69.4	57.5	5 400	71.7	56.4	5 700	26.0
		28.0	65.1	57.0	4 400	67.3	56.6	4 700	69.6	55.4	5 000	28.0
		30.0	63.0	56.0	3 900	65.2	55.5	4 100	67.4	54.4	4 400	30.0
34.0	58.7	53.7	2 900	60.9	53.2	3 100	63.0	52.0	3 300	34.0		
38.0	54.2	50.9	2 200	56.3	50.4	2 400	58.3	49.1	2 500	38.0		
42.0	49.4	47.7	1 600	51.4	47.1	1 700	53.3	45.7	1 900	42.0		
51.8	170	13.7	79.8	65.0	9 000*							13.7
		14.0	79.5	64.9	9 000*							14.0
		15.0	78.6	64.7	9 000*							15.0
		16.0	77.7	64.5	9 000*							16.0
		17.0	76.8	64.2	9 000*	79.9	64.1	9 000*				17.0
		18.0	75.8	64.0	9 000*	78.0	63.6	9 000*				18.0
		19.0	74.9	63.7	8 600*	77.1	63.3	8 800*	79.4	62.2	9 000*	19.0
		20.0	74.0	63.4	7 900	76.1	63.0	8 400	78.5	61.9	8 900	20.0
		21.0	73.1	63.1	7 300	75.2	62.7	7 700	77.5	61.6	8 200	21.0
		22.0	72.1	62.8	6 700	74.3	62.3	7 100	76.6	61.2	7 500	22.0
		24.0	70.2	62.0	5 800	72.4	61.6	6 100	74.6	60.5	6 500	24.0
		26.0	68.3	61.2	5 000	70.4	60.8	5 300	72.7	59.7	5 600	26.0
		28.0	66.4	60.4	4 300	68.5	59.9	4 600	70.7	58.8	4 900	28.0
		30.0	64.4	59.4	3 700	66.5	59.0	4 000	68.6	57.8	4 200	30.0
		34.0	60.4	57.2	2 700	62.4	56.8	3 000	64.5	55.6	3 200	34.0
38.0	56.1	54.7	2 100	58.2	54.2	2 200	60.1	52.9	2 400	38.0		
42.0	51.7	51.7	1 500	53.7	51.1	1 600	55.5	49.8	1 700	42.0		

BOOM LGTH. METERS	BOOM LGTH. FEET	JIB OPER. RADIUS METERS	3 DEGREE OFFSET			15 DEGREE OFFSET			30 DEGREE OFFSET			JIB OPER. RADIUS METERS
			BOOM ANG. DEG.	JIB POINT ELEV. METERS	CAPACITY KILOGRAMS	BOOM ANG. DEG.	JIB POINT ELEV. METERS	CAPACITY KILOGRAMS	BOOM ANG. DEG.	JIB POINT ELEV. METERS	CAPACITY KILOGRAMS	
54.9	180	13.7	80.2	68.1	9 000*							13.7
		14.0	80.0	68.0	9 000*							14.0
		15.0	79.1	67.8	9 000*							15.0
		16.0	78.2	67.6	9 000*							16.0
		17.0	77.4	67.4	9 000*	80.3	67.2	9 000*				17.0
		18.0	76.5	67.1	9 000*	78.6	66.7	9 000*				18.0
		19.0	75.6	66.9	8 500*	77.7	66.4	8 700*	79.9	65.4	8 900*	19.0
		20.0	74.7	66.6	7 800	76.8	66.2	8 200	79.0	65.1	8 800	20.0
		21.0	73.8	66.3	7 100	75.9	65.9	7 600	78.1	64.8	8 200	21.0
		22.0	73.0	66.0	6 600	75.0	65.5	7 000	77.2	64.4	7 400	22.0
		24.0	71.2	65.3	5 600	73.2	64.9	6 000	75.4	63.7	6 400	24.0
		26.0	69.4	64.5	4 800	71.4	64.1	5 200	73.5	63.0	5 500	26.0
		28.0	67.5	63.7	4 200	69.5	63.3	4 400	71.6	62.1	4 700	28.0
		30.0	65.7	62.8	3 600	67.7	62.4	3 800	69.7	61.2	4 100	30.0
		34.0	61.8	60.8	2 600	63.8	60.3	2 800	65.8	59.1	3 100	34.0
38.0	57.9	58.3	1 900	59.8	57.9	2 100	61.7	56.6	2 300	38.0		
42.0				55.6	55.0	1 500	57.4	53.7	1 600	42.0		

MANITOWOC M-85w – Liftcrane jib capacities jib no. 131

with 3 658mm strut on boom no. 47 3 080 KG CRAWLER FRAME COUNTERWEIGHT

21 090 KG COUNTERWEIGHT

6 807 MM CRAWLERS EXTENDED

360° RATING

15.2m (50 FT) JIB

BOOM LGTH. METERS	BOOM LGTH. FEET	JIB OPER. RADIUS METERS	3 DEGREE OFFSET			15 DEGREE OFFSET			30 DEGREE OFFSET			JIB OPER. RADIUS METERS
			BOOM ANG. DEG.	JIB POINT ELEV. METERS	CAPACITY KILOGRAMS	BOOM ANG. DEG.	JIB POINT ELEV. METERS	CAPACITY KILOGRAMS	BOOM ANG. DEG.	JIB POINT ELEV. METERS	CAPACITY KILOGRAMS	
27.4	90	9.1	81.0	44.1	9 000*							9.1
		10.0	79.8	44.0	9 000*							10.0
		11.0	78.5	43.7	9 000*							11.0
		12.0	77.1	43.5	9 000*							12.0
		13.0	75.7	43.2	9 000*							13.0
		14.0	74.3	42.9	9 000*	79.8	42.8	9 000*				14.0
		15.0	72.9	42.6	9 000*	78.4	42.5	9 000*				15.0
		16.0	71.5	42.3	9 000*	77.0	42.2	9 000*				16.0
		17.0	70.1	41.9	9 000*	75.6	41.9	9 000*				17.0
		18.0	68.7	41.5	9 000*	74.2	41.5	8 900*	78.6	40.4	8 100*	17.0
		19.0	67.2	41.0	9 000*	72.7	41.1	8 800*	77.1	39.9	7 800*	18.0
		20.0	65.7	40.6	8 800*	71.2	40.6	8 700*	75.6	39.5	7 600*	19.0
		21.0	64.3	40.1	8 500*	69.8	40.1	8 500*	74.1	39.0	7 400*	20.0
		22.0	62.8	39.5	8 000*	68.3	39.6	8 400*	72.6	38.5	7 200*	21.0
		24.0	59.7	38.4	7 000*	66.7	39.1	8 200*	71.0	37.9	6 900*	22.0
		26.0	56.5	37.0	6 200*	65.6	37.9	7 200*	67.8	36.7	6 600*	24.0
		28.0	53.2	35.5	5 500*	60.4	36.6	6 400*	64.4	35.3	6 300*	26.0
		30.0	49.7	33.9	4 900*	57.0	35.1	5 700*	60.9	33.7	5 900*	28.0
		34.0	42.1	29.8	4 000*	53.5	33.4	5 100*	57.2	32.0	5 300*	30.0
		38.0	33.1	24.3	3 300*	45.8	29.2	4 100*	49.1	27.6	4 200*	34.0
				36.5	23.5	3 300*					38.0	
30.5	100	10.7	79.6	46.9	9 000*							10.7
		11.0	79.2	46.9	9 000*							11.0
		12.0	78.0	46.6	9 000*							12.0
		13.0	76.7	46.4	9 000*							13.0
		14.0	75.4	46.1	9 000*							14.0
		15.0	74.1	45.8	9 000*	79.2	45.7	9 000*				15.0
		16.0	72.8	45.5	9 000*	77.9	45.4	9 000*				16.0
		17.0	71.5	45.1	9 000*	76.6	45.1	9 000*				17.0
		18.0	70.1	44.8	9 000*	75.3	44.7	9 000*	79.5	43.6	8 100*	17.0
		19.0	68.8	44.4	9 000*	73.9	44.3	8 800*	78.1	43.2	8 000*	18.0
		20.0	67.5	43.9	8 900*	72.6	43.9	8 700*	76.7	42.8	7 800*	19.0
		21.0	66.1	43.5	8 300*	71.2	43.5	8 600*	75.3	42.3	7 500*	20.0
		22.0	64.7	43.0	7 800*	69.8	43.0	8 500*	73.9	41.8	7 300*	21.0
		24.0	61.9	41.9	6 800*	68.4	42.5	8 100*	72.4	41.3	7 100*	22.0
		26.0	59.0	40.7	6 000*	65.6	41.5	7 100*	69.5	40.2	6 800*	24.0
		28.0	56.0	39.4	5 300*	62.7	40.2	6 300*	66.5	39.0	6 500*	26.0
30.0	52.9	37.8	4 800*	59.6	38.9	5 600*	63.3	37.6	5 800*	28.0		
34.0	46.2	34.3	3 800*	56.5	37.3	4 900*	60.1	36.0	5 100*	30.0		
38.0	38.7	29.7	3 100*	49.7	33.7	4 000*	53.0	32.2	4 100*	34.0		
42.0	29.5	23.4	2 500*	42.0	29.0	3 200*					38.0	
											42.0	
35.3	110	10.7	80.3	50.0	9 000*							10.7
		11.0	79.9	50.0	9 000*							11.0
		12.0	78.7	49.8	9 000*							12.0
		13.0	77.5	49.5	9 000*							13.0
		14.0	76.3	49.3	9 000*	79.9	48.9	9 000*				14.0
		15.0	75.1	49.0	9 000*	78.7	48.6	9 000*				15.0
		16.0	73.9	48.7	9 000*	77.5	48.3	9 000*				16.0
		17.0	72.7	48.4	9 000*	76.2	47.9	9 000*				17.0
		18.0	71.4	48.0	9 000*	75.0	47.6	8 900*	80.2	46.8	8 100*	17.0
		19.0	70.2	47.6	9 000*	73.7	47.2	8 800*	78.9	46.4	8 100*	18.0
		20.0	68.9	47.2	8 900*	72.5	46.8	8 700*	77.6	46.0	7 900*	19.0
		21.0	67.7	46.8	8 300*	71.2	46.4	8 600*	76.3	45.6	7 700*	20.0
		22.0	66.4	46.4	7 600*	69.9	45.9	8 000*	75.0	45.2	7 500*	21.0
		24.0	63.8	45.4	6 700*	67.3	44.9	7 000*	73.7	44.7	7 300*	22.0
		26.0	61.1	44.3	5 900*	64.6	43.8	6 100*	71.0	43.7	7 000*	24.0
		28.0	58.4	43.0	5 200*	61.8	42.6	5 400*	68.2	42.5	6 400*	26.0
30.0	55.6	41.7	4 700*	59.0	41.2	4 800*	65.3	41.2	5 700*	28.0		
34.0	49.6	38.5	3 700*	52.9	37.9	3 800*	62.4	39.8	5 000*	30.0		
38.0	43.0	34.5	3 000*	46.2	33.8	3 100*	56.1	36.4	4 000*	34.0		
42.0	35.4	29.3	2 400*	38.5	28.6	2 500*	49.1	32.2	3 200*	38.0		
46.0	25.9	22.2	1 900*								42.0	
											46.0	

MANITOWOC M-85W – Liftcrane jib capacities jib no. 131

with 3 658mm strut on boom no. 47 3 080 KG CRAWLER FRAME COUNTERWEIGHT

21 090 KG COUNTERWEIGHT

6 807 MM CRAWLERS EXTENDED

360° RATING

15.2m (50 FT) JIB

BOOM LGTH. METERS	BOOM LGTH. FEET	JIB OPER. RADIUS METERS	3 DEGREE OFFSET			15 DEGREE OFFSET			30 DEGREE OFFSET			JIB OPER. RADIUS METERS
			BOOM ANG. DEG.	JIB POINT ELEV. METERS	CAPACITY KILOGRAMS	BOOM ANG. DEG.	JIB POINT ELEV. METERS	CAPACITY KILOGRAMS	BOOM ANG. DEG.	JIB POINT ELEV. METERS	CAPACITY KILOGRAMS	
6.63	12.0	10.7	80.8	53.1	9 000*							10.7
		11.0	80.5	53.1	9 000*							11.0
		12.0	79.4	52.9	9 000*							12.0
		13.0	78.3	52.7	9 000*							13.0
		14.0	77.1	52.4	9 000*	80.5	52.0	9 000*				14.0
		15.0	76.0	52.2	9 000*	79.4	51.7	9 000*				15.0
		16.0	74.9	51.9	9 000*	78.2	51.4	9 000*				16.0
		17.0	73.7	51.6	9 000*	77.1	51.1	9 000*				17.0
		18.0	72.6	51.2	9 000*	75.9	50.8	8 900*				18.0
		19.0	71.4	50.9	8 900*	74.7	50.4	8 800*	78.4	49.3	8 000*	19.0
		20.0	70.2	50.5	8 700*	73.6	50.1	8 700*	77.2	48.9	7 900*	20.0
		21.0	69.1	50.1	8 100	72.4	49.7	8 300	76.0	48.5	7 700*	21.0
		22.0	67.9	49.7	7 500	71.2	49.2	7 900	74.7	48.0	7 500*	22.0
		24.0	65.5	48.8	6 600	68.7	48.3	6 800	72.2	47.1	7 100	24.0
		26.0	63.0	47.8	5 800	66.2	47.3	6 000	69.7	46.0	6 300	26.0
		28.0	60.5	46.6	5 100	63.7	46.1	5 300	67.0	44.8	5 600	28.0
		30.0	57.9	45.4	4 500	61.1	44.9	4 700	64.3	43.5	4 900	30.0
		34.0	52.5	42.5	3 600	55.6	41.9	3 700	58.7	40.5	3 900	34.0
		38.0	46.6	38.9	2 800	49.6	38.3	3 000	52.4	36.7	3 100	38.0
		42.0	40.0	34.4	2 200	42.9	33.8	2 400				42.0
46.0	32.4	28.7	1 800	35.1	27.9	1 800				46.0		
50.0	22.4	20.5	1 400							50.0		
6.93	13.0	12.2	79.8	56.0	9 000*							12.2
		13.0	78.9	55.8	9 000*							13.0
		14.0	77.9	55.6	9 000*							14.0
		15.0	76.8	55.3	9 000*							15.0
		16.0	75.7	55.0	9 000*	78.9	54.6	9 000*				16.0
		17.0	74.6	54.8	9 000*	77.8	54.3	9 000*				17.0
		18.0	73.6	54.4	9 000*	76.7	54.0	8 900*				18.0
		19.0	72.5	54.1	8 800*	75.6	53.7	8 800*	79.1	52.5	8 000*	19.0
		20.0	71.4	53.8	8 500	74.5	53.3	8 700*	77.9	52.1	8 000*	20.0
		21.0	70.3	53.4	7 900	73.4	52.9	8 300	76.8	51.7	7 800*	21.0
		22.0	69.2	53.0	7 300	72.3	52.5	7 700	75.7	51.3	7 600*	22.0
		24.0	66.9	52.1	6 400	70.0	51.7	6 700	73.3	50.4	7 100	24.0
		26.0	64.6	51.2	5 600	67.7	50.7	5 900	70.9	49.4	6 200	26.0
		28.0	62.3	50.1	4 900	65.3	49.7	5 200	68.5	48.3	5 500	28.0
		30.0	59.9	49.0	4 300	62.9	48.5	4 600	66.0	47.1	4 800	30.0
		34.0	54.9	46.3	3 400	57.9	45.8	3 600	60.8	44.3	3 800	34.0
38.0	49.5	43.1	2 600	52.5	42.5	2 800	55.2	40.9	3 000	38.0		
42.0	43.7	39.1	2 100	46.6	38.5	2 200	49.1	36.8	2 300	42.0		
46.0	37.2	34.2	1 600	39.9	33.5	1 700				46.0		
4.27	14.0	12.2	80.3	59.1	9 000*							12.2
		13.0	79.5	58.9	9 000*							13.0
		14.0	78.5	58.7	9 000*							14.0
		15.0	77.5	58.5	9 000*							15.0
		16.0	76.5	58.2	9 000*	79.5	57.8	9 000*				16.0
		17.0	75.5	57.9	9 000*	78.5	57.5	9 000*				17.0
		18.0	74.4	57.6	9 000*	77.5	57.2	8 900*				18.0
		19.0	73.4	57.3	8 800*	76.4	56.9	8 800*	79.7	55.6	8 000*	19.0
		20.0	72.4	57.0	8 400	75.4	56.5	8 600*	78.6	55.3	7 900*	20.0
		21.0	71.3	56.6	7 800	74.3	56.2	8 200	77.6	54.9	7 900*	21.0
		22.0	70.3	56.3	7 200	73.3	55.8	7 600	76.5	54.6	7 800*	22.0
		24.0	68.2	55.5	6 200	71.1	55.0	6 600	74.3	53.7	7 000	24.0
		26.0	66.0	54.6	5 400	69.0	54.1	5 800	72.1	52.8	6 100	26.0
		28.0	63.8	53.6	4 800	66.8	53.1	5 100	69.8	51.8	5 400	28.0
		30.0	61.6	52.5	4 200	64.5	52.0	4 400	67.5	50.7	4 700	30.0
		34.0	57.0	50.0	3 300	59.8	49.5	3 500	62.7	48.1	3 700	34.0
38.0	52.1	47.1	2 500	54.9	46.5	2 700	57.6	45.0	2 900	38.0		
42.0	46.8	43.5	1 900	49.6	42.9	2 100	52.0	41.2	2 200	42.0		
46.0	41.1	39.2	1 500	43.7	38.5	1 500				46.0		

MANITOWOC M-85w – Liftcrane jib capacities jib no. 131

with 3 658mm strut on boom no. 47 3 080 KG CRAWLER FRAME COUNTERWEIGHT

21 090 KG COUNTERWEIGHT

6 807 MM CRAWLERS EXTENDED

360° RATING

15.2m (50 FT) JIB

BOOM LGTH. METERS	BOOM LGTH. FEET	JIB OPER. RADIUS METERS	3 DEGREE OFFSET			15 DEGREE OFFSET			30 DEGREE OFFSET			JIB OPER. RADIUS METERS	
			BOOM ANG. DEG.	JIB POINT ELEV. METERS	CAPACITY KILOGRAMS	BOOM ANG. DEG.	JIB POINT ELEV. METERS	CAPACITY KILOGRAMS	BOOM ANG. DEG.	JIB POINT ELEV. METERS	CAPACITY KILOGRAMS		
45.7	150	12.2	80.8	52.2	9 000*							12.2	
		13.0	80.0	62.0	9 000*								13.0
		14.0	79.1	61.8	9 000*								14.0
		15.0	78.1	61.6	9 000*								15.0
		16.0	77.2	61.3	9 000*	80.0	60.9	9 000*					16.0
		17.0	76.2	61.1	9 000*	79.1	60.6	8 900*					17.0
		18.0	75.2	60.8	9 000*	78.1	60.4	8 800*					18.0
		19.0	74.3	60.5	8 700*	77.1	60.1	8 700*	80.2	58.8	7 900*		19.0
		20.0	73.3	60.2	8 300*	76.1	59.7	8 600*	79.2	58.5	7 900*		20.0
		21.0	72.3	59.9	7 700*	75.1	59.4	8 100*	78.2	58.2	7 800*		21.0
		22.0	71.3	59.5	7 100*	74.1	59.1	7 500*	77.2	57.8	7 700*		22.0
		24.0	69.3	58.8	6 100*	72.1	58.3	6 500*	75.2	57.0	7 000*		24.0
		26.0	67.3	57.9	5 300*	70.1	57.4	5 700*	73.1	56.1	6 000*		26.0
		28.0	65.2	57.0	4 700*	68.0	56.5	5 000*	70.9	55.2	5 300*		28.0
		30.0	63.2	56.0	4 100*	65.9	55.5	4 400*	68.8	54.1	4 600*		30.0
		34.0	58.8	53.7	3 100*	61.6	53.1	3 400*	64.3	51.7	3 600*		34.0
		38.0	54.3	50.9	2 400*	57.0	50.4	2 600*	59.6	48.9	2 800*		38.0
		42.0	49.5	47.7	1 800*	52.1	47.1	2 000*	54.5	45.5	2 100*		42.0
46.0				46.8	43.1	1 500*	49.1	41.4	1 600*		46.0		
48.8	160	13.7	79.9	65.0	9 000*							13.7	
		14.0	79.6	64.9	9 000*								14.0
		15.0	78.7	64.7	9 000*								15.0
		16.0	77.8	64.5	9 000*								16.0
		17.0	76.9	64.2	9 000*	79.6	63.8	8 800*					17.0
		18.0	76.0	64.0	9 000*	78.7	63.5	8 700*					18.0
		19.0	75.0	63.7	8 700*	77.8	63.2	8 700*					19.0
		20.0	74.1	63.4	8 100*	76.8	62.9	8 600*	79.8	61.7	7 800*		20.0
		21.0	73.2	63.1	7 600*	75.9	62.6	8 000*	78.8	61.4	7 800*		21.0
		22.0	72.2	62.8	7 000*	74.9	62.3	7 400*	77.9	61.0	7 700*		22.0
		24.0	70.3	62.0	6 000*	73.0	61.6	6 400*	75.9	60.3	6 900*		24.0
		26.0	68.4	61.2	5 200*	71.1	60.8	5 500*	73.9	59.5	5 900*		26.0
		28.0	66.5	60.4	4 500*	69.2	59.9	4 800*	71.9	58.6	5 200*		28.0
		30.0	64.5	59.4	3 900*	67.2	58.9	4 200*	69.9	57.6	4 600*		30.0
		34.0	60.5	57.2	3 000*	63.1	56.7	3 200*	65.7	55.3	3 500*		34.0
		38.0	56.3	54.7	2 300*	58.8	54.1	2 500*	61.3	52.7	2 700*		38.0
		42.0	51.8	51.7	1 700*	54.3	51.1	1 800*	56.7	49.5	2 000*		42.0
		46.0							51.7	45.8	1 500*		46.0
51.8	170	13.7	80.3	68.1	9 000*							13.7	
		14.0	80.1	68.0	9 000*								14.0
		15.0	79.2	67.8	9 000*								15.0
		16.0	78.3	67.6	9 000*								16.0
		17.0	77.5	67.4	9 000*	80.1	66.9	8 700*					17.0
		18.0	76.6	67.1	9 000*	79.2	66.7	8 600*					18.0
		19.0	75.7	66.9	8 600*	78.3	66.4	8 600*					19.0
		20.0	74.8	66.6	8 000*	77.4	66.1	8 500*	80.3	64.8	7 700*		20.0
		21.0	74.0	66.3	7 400*	76.5	65.8	7 900*	79.4	64.5	7 700*		21.0
		22.0	73.1	66.0	6 800*	75.7	65.5	7 300*	78.5	64.2	7 600*		22.0
		24.0	71.3	65.3	5 800*	73.8	64.8	6 200*	76.6	63.5	6 800*		24.0
		26.0	69.5	64.5	5 000*	72.0	64.0	5 400*	74.7	62.7	5 900*		26.0
		28.0	67.6	63.7	4 400*	70.2	63.2	4 700*	72.8	61.9	5 100*		28.0
		30.0	65.8	62.8	3 800*	68.3	62.3	4 100*	70.9	60.9	4 400*		30.0
		34.0	61.9	60.8	2 800*	64.4	60.2	3 100*	67.0	58.8	3 400*		34.0
		38.0	58.0	58.3	2 100*	60.4	57.8	2 300*	62.9	56.3	2 600*		38.0
		42.0	53.8	55.5	1 500*	56.3	55.0	1 700*	58.6	53.4	1 900*		42.0
		54.9	180	13.7	80.8	71.2	9 000*						
14.0	80.5			71.1	9 000*								14.0
15.0	79.7			70.9	8 900*								15.0
16.0	78.9			70.7	8 900*								16.0
17.0	78.0			70.5	8 800*	80.5	70.0	8 600*					17.0
18.0	77.2			70.3	8 800*	79.7	69.8	8 500*					18.0
19.0	76.4			70.0	8 500*	78.8	69.5	8 400*					19.0
20.0	75.5			69.7	7 900*	78.0	69.3	8 300*	80.7	68.0	7 600*		20.0
21.0	74.7			69.5	7 200*	77.2	69.0	7 800*	79.9	67.7	7 600*		21.0
22.0	73.8			69.2	6 700*	76.3	68.7	7 200*	79.0	67.4	7 400*		22.0
24.0	72.1			68.5	5 700*	74.6	68.0	6 200*	77.2	66.7	6 700*		24.0
26.0	70.4			67.8	4 900*	72.8	67.3	5 300*	75.5	66.0	5 800*		26.0
28.0	68.6			67.0	4 200*	71.1	66.5	4 600*	73.7	65.2	5 000*		28.0
30.0	66.9			66.2	3 600*	69.3	65.7	4 000*	71.8	64.3	4 300*		30.0
34.0	63.3			64.2	2 700*	65.7	63.7	3 000*	68.1	62.3	3 300*		34.0
38.0	59.5			61.9	2 000*	61.9	61.4	2 200*	64.3	60.0	2 400*		38.0
42.0						58.0	58.8	1 600*	60.2	57.2	1 800*		42.0

MANITOWOC M-85W – Liftcrane jib capacities jib no. 131

with 3 658mm strut on boom no. 47 3 080 KG CRAWLER FRAME COUNTERWEIGHT

21 090 KG COUNTERWEIGHT

6 807 MM CRAWLERS EXTENDED

360° RATING

18.3m (60 FT) JIB

BOOM LGTH. METERS	BOOM LGTH. FEET	JIB OPER. RADIUS METERS	3 DEGREE OFFSET			15 DEGREE OFFSET			30 DEGREE OFFSET			JIB OPER. RADIUS METERS
			BOOM ANG. DEG.	JIB POINT ELEV. METERS	CAPACITY KILOGRAMS	BOOM ANG. DEG.	JIB POINT ELEV. METERS	CAPACITY KILOGRAMS	BOOM ANG. DEG.	JIB POINT ELEV. METERS	CAPACITY KILOGRAMS	
27.4	90	10.7	79.5	46.9	9 000*							10.7
		11.0	79.1	46.9	9 000*							11.0
		12.0	77.9	46.6	9 000*							12.0
		13.0	76.6	46.4	8 900*							13.0
		14.0	75.3	46.1	8 700*	79.9	45.7	7 900*				14.0
		15.0	74.0	45.8	8 600*	78.6	45.4	7 700*				15.0
		16.0	72.7	45.5	8 400*	77.3	45.1	7 600*				16.0
		17.0	71.4	45.1	8 200*	75.9	44.7	7 400*				17.0
		18.0	70.0	44.8	8 000*	74.6	44.4	7 300*				18.0
		19.0	68.7	44.4	7 900*	73.3	44.0	7 200*	78.4	42.8	6 400*	19.0
		20.0	67.4	43.9	7 700*	71.9	43.5	7 000*	77.0	42.3	6 300*	20.0
		21.0	66.0	43.5	7 500*	70.5	43.1	6 900*	75.5	41.8	6 200*	21.0
		22.0	64.6	43.0	7 300*	69.1	42.6	6 800*	74.1	41.3	6 000*	22.0
		24.0	61.8	41.9	6 900*	66.3	41.5	6 500*	71.2	40.2	5 700*	24.0
		26.0	58.9	40.7	6 200*	63.3	40.3	6 300*	68.1	38.9	5 400*	26.0
		28.0	55.9	39.4	5 500*	60.3	38.9	5 800*	65.0	37.5	5 100*	28.0
		30.0	52.8	37.9	5 000*	57.2	37.4	5 200*	61.7	35.9	4 900*	30.0
		34.0	46.1	34.3	4 000*	50.4	33.7	4 200*	54.7	32.1	4 400*	34.0
		38.0	38.6	29.7	3 300*	42.7	29.0	3 400*	46.5	27.1	3 500*	38.0
		42.0	29.4	23.4	2 700*	33.2	22.6	2 800*				42.0
30.5	100	10.7	80.2	50.0	9 000*							10.7
		11.0	79.8	50.0	9 000*							11.0
		12.0	78.6	49.8	9 000*							12.0
		13.0	77.4	49.5	8 900*							13.0
		14.0	76.2	49.3	8 800*	80.5	48.9	8 000*				14.0
		15.0	75.0	49.0	8 600*	79.3	48.6	7 800*				15.0
		16.0	73.8	48.7	8 400*	78.1	48.3	7 600*				16.0
		17.0	72.6	48.4	8 300*	76.9	48.0	7 500*				17.0
		18.0	71.3	48.0	8 100*	75.6	47.6	7 400*				18.0
		19.0	70.1	47.6	8 000*	74.4	47.2	7 300*	79.2	46.0	6 400*	19.0
		20.0	68.8	47.2	7 800*	73.1	46.8	7 100*	77.9	45.6	6 300*	20.0
		21.0	67.6	46.8	7 700*	71.8	46.4	7 000*	76.6	45.1	6 200*	21.0
		22.0	66.3	46.4	7 500*	70.5	45.9	6 900*	75.2	44.7	6 100*	22.0
		24.0	63.7	45.4	6 900*	67.9	44.9	6 700*	72.5	43.6	5 800*	24.0
		26.0	61.0	44.3	6 000*	65.2	43.8	6 300*	69.8	42.5	5 500*	26.0
		28.0	58.3	43.1	5 400*	62.5	42.6	5 600*	66.9	41.2	5 300*	28.0
		30.0	55.5	41.7	4 800*	59.6	41.2	5 000*	63.9	39.8	5 000*	30.0
		34.0	49.5	38.5	3 900*	53.6	37.9	4 100*	57.6	36.4	4 200*	34.0
		38.0	42.9	34.5	3 100*	46.9	33.9	3 300*	50.6	32.1	3 400*	38.0
		42.0	35.4	29.3	2 600*	39.1	28.6	2 700*				42.0
46.0	25.8	22.2	2 100*							46.0		
33.5	110	10.7	80.7	53.2	9 000*							10.7
		11.0	80.4	53.1	9 000*							11.0
		12.0	79.3	52.9	9 000*							12.0
		13.0	78.2	52.7	8 900*							13.0
		14.0	77.0	52.4	8 800*							14.0
		15.0	75.9	52.2	8 700*							15.0
		16.0	74.8	51.9	8 500*	78.8	51.5	7 700*				16.0
		17.0	73.6	51.6	8 400*	77.7	51.2	7 600*				17.0
		18.0	72.5	51.3	8 200*	76.5	50.8	7 500*				18.0
		19.0	71.3	50.9	8 100*	75.3	50.5	7 300*	79.9	49.2	6 400*	19.0
		20.0	70.1	50.5	7 900*	74.2	50.1	7 200*	78.6	48.8	6 300*	20.0
		21.0	69.0	50.1	7 800*	73.0	49.7	7 100*	77.4	48.4	6 300*	21.0
		22.0	67.8	49.7	7 500*	71.8	49.3	7 000*	76.2	48.0	6 200*	22.0
		24.0	65.4	48.8	6 800*	69.3	48.3	6 800*	73.7	47.0	6 000*	24.0
		26.0	62.9	47.8	5 900*	66.8	47.3	6 200*	71.1	46.0	5 700*	26.0
		28.0	60.4	46.6	5 300*	64.3	46.2	5 500*	68.5	44.8	5 400*	28.0
		30.0	57.8	45.4	4 700*	61.7	44.9	4 900*	65.8	43.5	5 100*	30.0
		34.0	52.4	42.5	3 800*	56.2	41.9	3 900*	60.1	40.4	4 100*	34.0
		38.0	46.5	38.9	3 000*	50.2	38.3	3 200*	53.9	36.6	3 300*	38.0
		42.0	39.9	34.5	2 400*	43.6	33.8	2 500*	46.8	31.8	2 700*	42.0
46.0	32.3	28.7	2 000*	35.7	27.9	2 000*				46.0		
50.0	22.3	20.6	1 600*							50.0		

MANITOWOC M-85w – Liftcrane jib capacities jib no. 131

with 3 658mm strut on boom no. 47 3 080 KG CRAWLER FRAME COUNTERWEIGHT

21 090 KG COUNTERWEIGHT

6 807 MM CRAWLERS EXTENDED

360° RATING

18.3m (60 FT) JIB

BOOM LGTH. METERS	BOOM LGTH. FEET	3 DEGREE OFFSET			15 DEGREE OFFSET			30 DEGREE OFFSET			JIB OPER. RADIUS METERS	
		JIB OPER. RADIUS METERS	JIB ANG. DEG.	JIB ELEV. METERS	CAPACITY KILOGRAMS	BOOM ANG. DEG.	JIB ELEV. METERS	CAPACITY KILOGRAMS	BOOM ANG. DEG.	JIB ELEV. METERS		CAPACITY KILOGRAMS
6.6	12.0	12.2	79.7	56.0	9 000*							12.2
		13.0	78.8	55.8	8 900*							13.0
		14.0	77.8	55.6	8 900*							14.0
		15.0	76.7	55.3	8 700*							15.0
		16.0	75.6	55.1	8 500*							16.0
		17.0	74.6	54.8	8 400*	79.5	54.6	7 800*				17.0
		18.0	73.5	54.5	8 200*	77.3	54.0	7 500*				18.0
		19.0	72.4	54.1	8 100*	76.2	53.7	7 400*				19.0
		20.0	71.3	53.8	8 000*	75.1	53.3	7 300*	79.3	52.0	6 400*	20.0
		21.0	70.2	53.4	7 800*	74.0	53.0	7 200*	78.2	51.6	6 300*	21.0
		22.0	69.1	53.0	7 600*	72.8	52.6	7 100*	77.0	51.2	6 200*	22.0
		24.0	66.8	52.2	6 600	70.6	51.7	6 800	74.7	50.3	6 100*	24.0
		26.0	64.5	51.2	5 800	68.3	50.7	6 100	72.3	49.4	5 800*	26.0
		28.0	62.2	50.2	5 100	65.9	49.7	5 400	69.9	48.3	5 500*	28.0
		30.0	59.8	49.0	4 500	63.5	48.5	4 800	67.4	47.1	5 100	30.0
		34.0	54.8	46.3	3 600	58.4	45.8	3 800	62.2	44.3	4 100	34.0
38.0	49.5	43.1	2 900	53.0	42.5	3 100	56.6	40.8	3 200	38.0		
42.0	43.7	39.1	2 300	47.1	38.5	2 400	50.4	36.7	2 500	42.0		
46.0	37.1	34.2	1 800	40.4	33.5	1 900				46.0		
50.0	29.3	27.9	1 400	32.4	27.0	1 500				50.0		
6.9	13.0	12.2	80.2	59.1	9 000*							12.2
		13.0	79.4	58.9	8 900*							13.0
		14.0	78.4	58.7	8 800*							14.0
		15.0	77.4	58.5	8 700*							15.0
		16.0	76.4	58.2	8 500*							16.0
		17.0	75.4	57.9	8 400*	80.0	57.8	7 800*				17.0
		18.0	74.4	57.6	8 300*	79.0	57.5	7 600*				18.0
		19.0	73.3	57.3	8 100*	78.0	57.2	7 500*				19.0
		20.0	72.3	57.0	8 000*	76.9	56.9	7 400*				20.0
		21.0	71.3	56.7	7 800	75.9	56.6	7 300*	79.9	55.2	6 400*	21.0
		22.0	70.2	56.3	7 500	74.9	56.2	7 200*	78.9	54.9	6 300*	22.0
		24.0	68.1	55.5	6 400	73.8	55.8	7 100*	77.8	54.5	6 300*	24.0
		26.0	66.0	54.6	5 600	71.7	55.0	6 700	75.6	53.6	6 100*	26.0
		28.0	63.8	53.6	4 900	69.5	54.1	6 000	73.4	52.7	5 900*	28.0
		30.0	61.5	52.5	4 400	67.3	53.1	5 200	71.1	51.7	5 600*	30.0
		34.0	56.9	50.0	3 400	65.0	52.0	4 700	68.8	50.6	5 000	34.0
38.0	52.0	47.1	2 700	60.4	49.5	3 700	64.0	48.0	3 900	38.0		
42.0	46.8	43.5	2 100	55.4	46.5	2 900	58.8	44.9	3 100	42.0		
46.0	41.0	39.2	1 600	50.1	42.9	2 300	53.3	41.1	2 500	46.0		
50.0				44.2	38.5	1 800	47.1	36.5	2 000	50.0		
				37.5	33.0	1 300				56.0		
4.2	14.0	12.2	80.7	62.2	9 000*							12.2
		13.0	80.0	62.0	8 900*							13.0
		14.0	79.0	61.8	8 700*							14.0
		15.0	78.0	61.6	8 600*							15.0
		16.0	77.1	61.4	8 500*							16.0
		17.0	76.1	61.1	8 400*	79.6	60.6	7 600*				17.0
		18.0	75.2	60.8	8 200*	78.6	60.4	7 500*				18.0
		19.0	74.2	60.5	8 100*	77.6	60.1	7 400*				19.0
		20.0	73.2	60.2	8 000*	76.6	59.8	7 300*	80.5	58.4	6 400*	20.0
		21.0	72.2	59.9	7 700	75.6	59.4	7 200*	79.5	58.1	6 300*	21.0
		22.0	71.2	59.5	7 300	74.6	59.1	7 100*	78.4	57.7	6 300*	22.0
		24.0	69.2	58.8	6 300	72.6	58.3	6 700	76.4	56.9	6 100*	24.0
		26.0	67.2	57.9	5 500	70.6	57.5	5 900	74.3	56.1	6 000*	26.0
		28.0	65.2	57.0	4 800	68.5	56.5	5 200	72.2	55.1	5 500	28.0
		30.0	63.1	56.0	4 200	66.4	55.5	4 500	70.0	54.0	4 900	30.0
		34.0	58.8	53.7	3 300	62.1	53.2	3 600	65.5	51.6	3 800	34.0
38.0	54.2	50.9	2 600	57.5	50.4	2 800	60.8	48.8	3 000	38.0		
42.0	49.4	47.7	2 000	52.6	47.1	2 100	55.7	45.3	2 300	42.0		
46.0	44.2	43.8	1 500	47.3	43.1	1 600	50.2	41.2	1 800	46.0		

MANITOWOC M-85W – Liftcrane jib capacities jib no. 131

with 3 658mm strut on boom no. 47 3 080 KG CRAWLER FRAME COUNTERWEIGHT

21 090 KG COUNTERWEIGHT

6 807 MM CRAWLERS EXTENDED

360° RATING

18.3m (60 FT) JIB

BOOM LGTH. METERS	BOOM LGTH. FEET	JIB OPER. RADIUS METERS	3 DEGREE OFFSET			15 DEGREE OFFSET			30 DEGREE OFFSET			JIB OPER. RADIUS METERS
			BOOM ANG. DEG.	JIB POINT ELEV. METERS	CAPACITY KILOGRAMS	BOOM ANG. DEG.	JIB POINT ELEV. METERS	CAPACITY KILOGRAMS	BOOM ANG. DEG.	JIB POINT ELEV. METERS	CAPACITY KILOGRAMS	
457	150	13.7	79.8	65.0	8 700*							13.7
		14.0	79.5	64.9	8 600*							14.0
		15.0	78.6	64.7	8 500*							15.0
		16.0	77.7	64.5	8 400*							16.0
		17.0	76.8	64.2	8 300*	80.1	63.8	7 600*				17.0
		18.0	75.9	64.0	8 200*	79.2	63.5	7 500*				18.0
		19.0	75.0	63.7	8 100*	78.2	63.2	7 400*				19.0
		20.0	74.0	63.4	8 000*	77.3	62.9	7 300*				20.0
		21.0	73.1	63.1	7 600	76.4	62.6	7 200*				21.0
		22.0	72.2	62.8	7 200	75.4	62.3	7 100*	79.0	60.9	6 300*	22.0
		24.0	70.3	62.0	6 200	73.5	61.6	6 600	77.1	60.2	6 100*	24.0
		26.0	68.4	61.3	5 400	71.6	60.8	5 800	75.1	59.3	6 100*	26.0
		28.0	66.4	60.4	4 700	69.6	59.9	5 100	73.1	58.4	5 500	28.0
		30.0	64.5	59.4	4 100	67.6	58.9	4 400	71.1	57.5	4 800	30.0
		34.0	60.4	57.3	3 200	63.6	56.7	3 400	66.9	55.2	3 700	34.0
38.0	56.2	54.7	2 400	59.3	54.1	2 700	62.5	52.5	2 900	38.0		
42.0	51.7	51.7	1 800	54.8	51.1	2 000	57.8	49.4	2 200	42.0		
46.0				50.0	47.5	1 500	52.8	45.6	1 700	46.0		
488	160	13.7	80.3	68.1	8 600*							13.7
		14.0	80.0	68.0	8 500*							14.0
		15.0	79.1	67.8	8 400*							15.0
		16.0	78.3	67.6	8 300*							16.0
		17.0	77.4	67.4	8 200*	80.5	66.9	7 500*				17.0
		18.0	76.5	67.1	8 100*	79.7	66.7	7 500*				18.0
		19.0	75.7	66.9	8 000*	78.8	66.4	7 400*				19.0
		20.0	74.8	66.6	7 900*	77.9	66.1	7 300*				20.0
		21.0	73.9	66.3	7 500	77.0	65.8	7 200*				21.0
		22.0	73.0	66.0	7 000	76.1	65.5	7 200*	79.6	64.1	6 300*	22.0
		24.0	71.2	65.3	6 000	74.3	64.8	6 600	77.7	63.4	6 100*	24.0
		26.0	69.4	64.5	5 200	72.5	64.1	5 700	75.9	62.6	6 100*	26.0
		28.0	67.6	63.7	4 500	70.6	63.2	4 900	74.0	61.8	5 400	28.0
		30.0	65.7	62.8	4 000	68.7	62.3	4 300	72.0	60.8	4 700	30.0
		34.0	61.9	60.8	3 000	64.9	60.2	3 300	68.1	58.7	3 600	34.0
38.0	57.9	58.4	2 300	60.9	57.8	2 600	64.0	56.2	2 800	38.0		
42.0	53.8	55.6	1 700	56.7	55.0	1 900	59.7	53.3	2 100	42.0		
46.0							55.1	49.9	1 600	46.0		
518	170	13.7	80.7	71.2	8 400*							13.7
		14.0	80.4	71.1	8 400*							14.0
		15.0	79.6	70.9	8 300*							15.0
		16.0	78.8	70.7	8 200*							16.0
		17.0	78.0	70.5	8 100*							17.0
		18.0	77.1	70.3	8 000*							18.0
		19.0	76.3	70.0	7 900*	79.3	69.5	7 300*				19.0
		20.0	75.4	69.8	7 800*	78.4	69.3	7 200*				20.0
		21.0	74.6	69.5	7 400	77.6	69.0	7 200*				21.0
		22.0	73.8	69.2	6 900	76.7	68.7	7 100*	80.1	67.3	6 200*	22.0
		24.0	72.1	68.5	5 900	75.0	68.0	6 400	78.3	66.6	6 100*	24.0
		26.0	70.3	67.8	5 100	73.3	67.3	5 500	76.5	65.9	6 100	26.0
		28.0	68.6	67.0	4 400	71.5	66.5	4 800	74.7	65.1	5 300	28.0
		30.0	66.8	66.2	3 800	69.7	65.7	4 200	72.9	64.2	4 600	30.0
		34.0	63.2	64.2	2 800	66.1	63.7	3 200	69.2	62.2	3 500	34.0
38.0	59.5	62.0	2 100	62.3	61.4	2 400	65.3	59.8	2 700	38.0		
42.0	55.6	59.3	1 600	58.4	58.8	1 800	61.3	57.1	2 000	42.0		
46.0							57.0	53.9	1 500	46.0		